

# SELFBRIEFING



**PMČRJ 2016**

VYSOKÉ MÝTO

**31.07. - 18.08.2016**

# TIME SCHEDULE

- ✓ Final entry: 15.07.2016
- ✓ Official training: 27. - 30.7.2016
- ✓ Welcome briefing: 30.7.2016, 20:00 local time
- ✓ Competition period: 31.7. – 12.8. 2016
- ✓ Price giving ceremony: 13.8.2016

# COMPETITION CLASSES

- ✓ Club class
- ✓ Kombi 15 class (standard class + 15m class gliders)
- ✓ CZIL handicap list will be used  
([http://www.gliding.cz/souteze/2016/pmcr\\_j/dokumenty](http://www.gliding.cz/souteze/2016/pmcr_j/dokumenty))

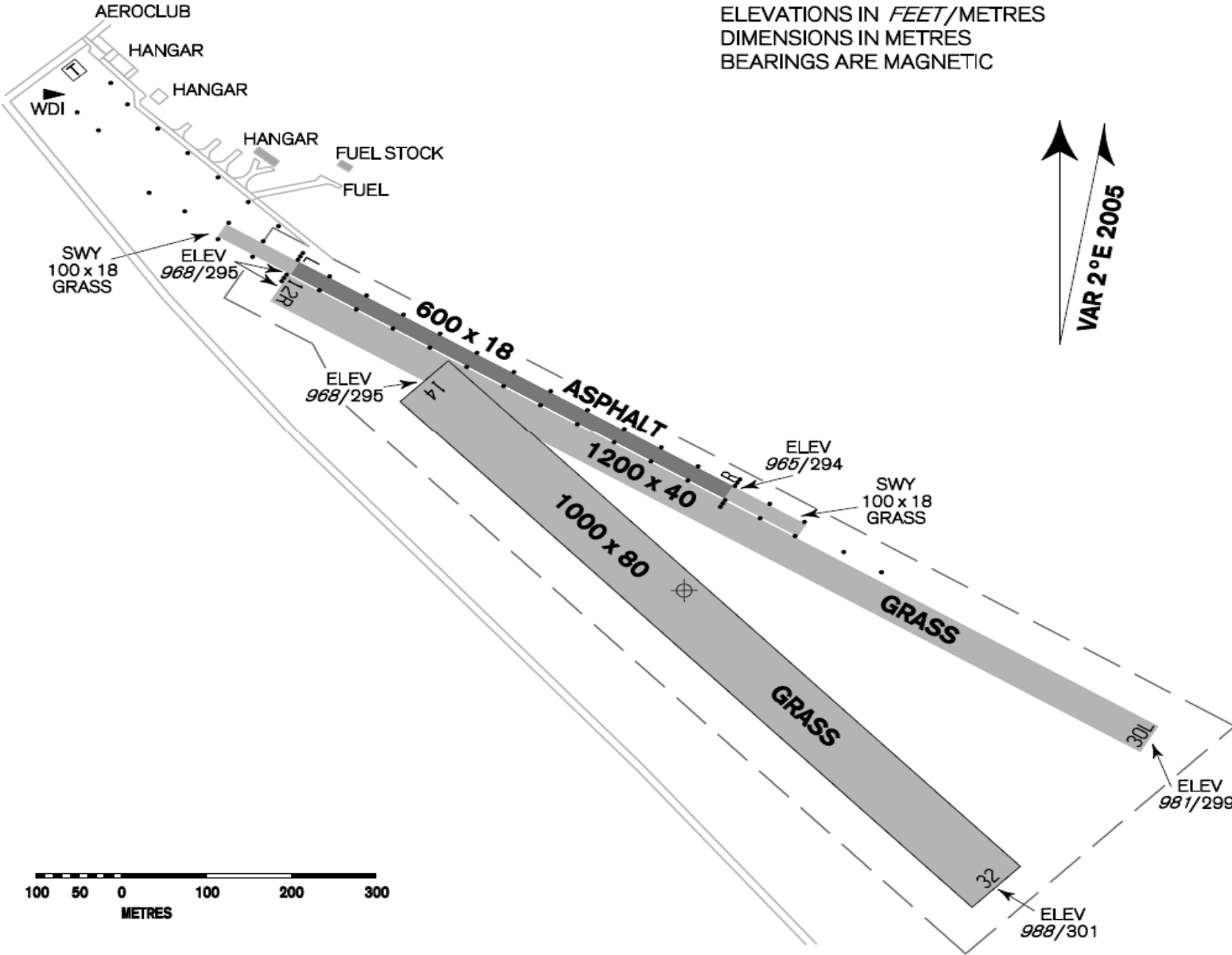
# QUALIFICATION FOR ENTRY

- ✓ All juniors according to SC3 2015 that means born after 31.12.1990.

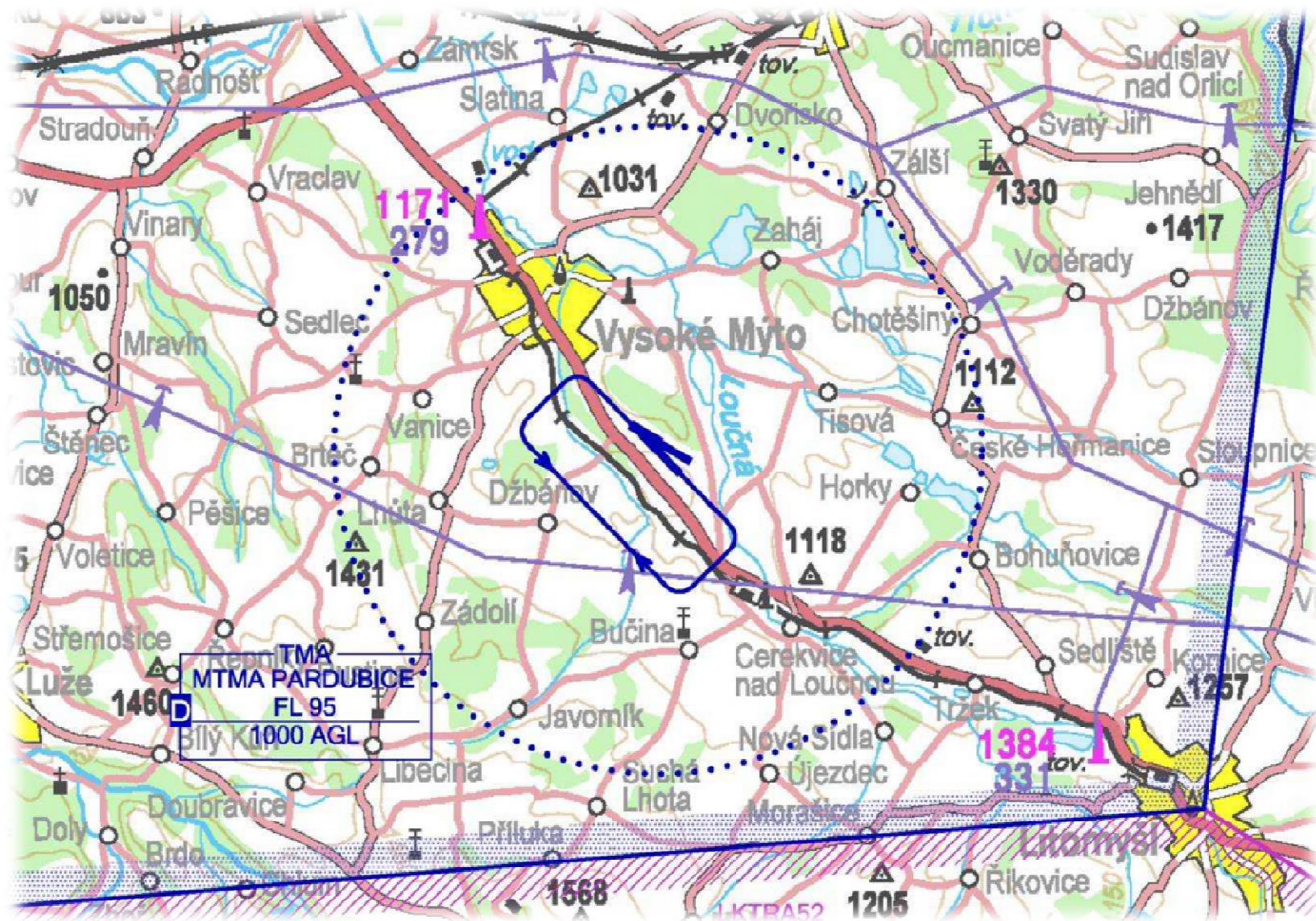
# ENTRY FEE AND TAXES

✓ Entry fee:	4000 Kč (150 EUR)
✓ AeroTOW price CLUB (600m):	600 Kč (23 EUR)
✓ AeroTOW price KOMBI (600m):	650 Kč (25 EUR)
✓ Closing day for payment of entry fee:	15.7.2016
✓ Bank account:	219 609 953/0600
✓ IBAN	CZ54 0600 0000 0002 1960 9953
✓ Payment identification (variable symbol)	personal identification number (Date of birth)
✓ Accomodation bedroom	100 Kč/Day (4 EUR/Day)
✓ Accomodation camping	60 Kč/Day (2,50 EUR/Day)

# LKVM – AIRFIELD SITUATION



# LKVM – AIRSPACE



# ARRIVALS (BY CAR)

✓ When arriving from Vysoké Mýto in heavy traffic, it is recommended to pass marked turn and proceed to the petrol station ONO. Where is possible to make safe U-turn.

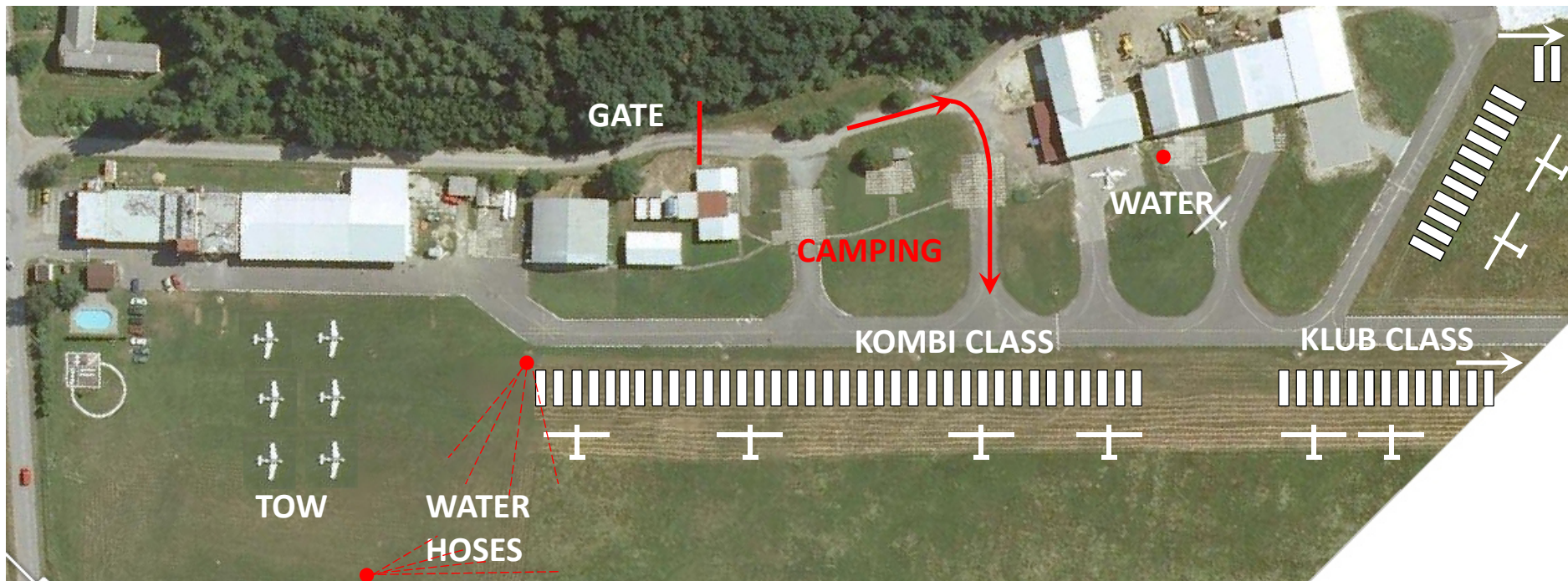
✓ After exit from main road proceed around the airfield to the right to the back gate. Use only back gate during the competition.





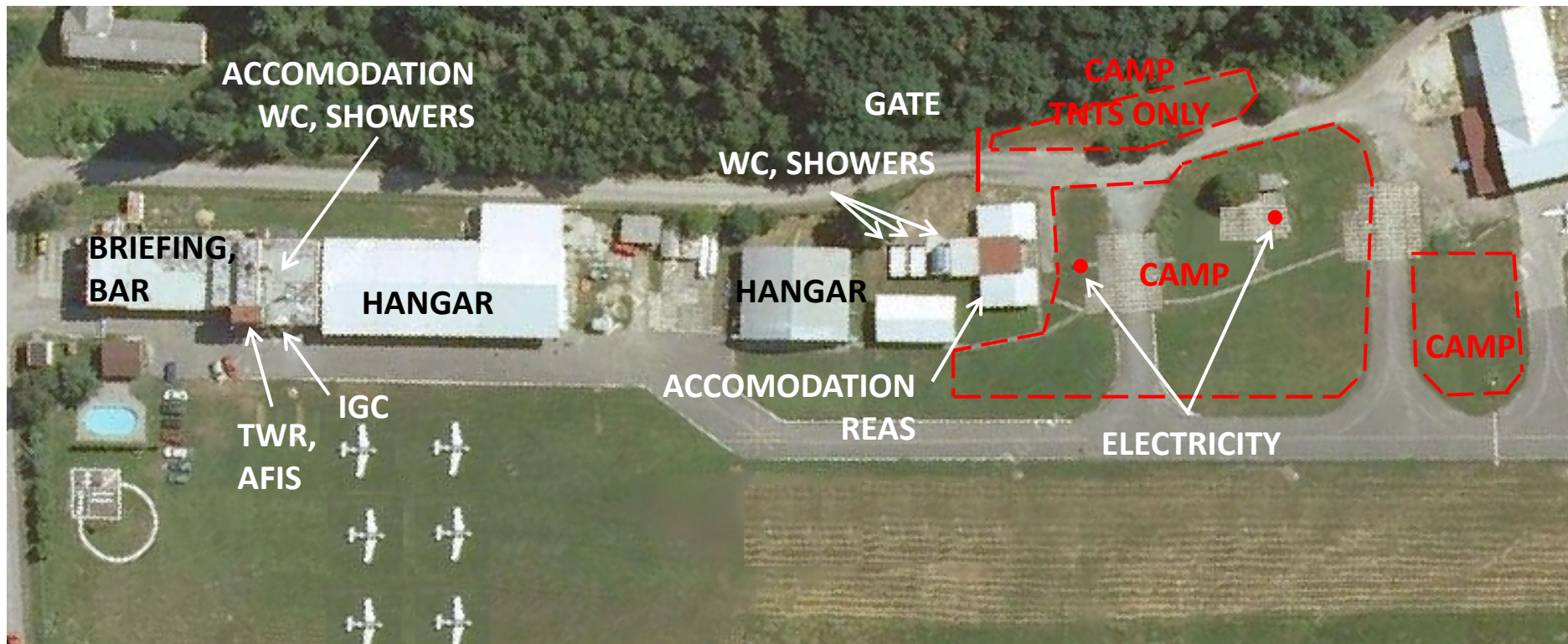
# PARKING OF GLIDERS

- ✓ For camp passage use the eastern way (red arrow)
- ✓ Gliders should be completed on the field to enable free passage of the taxiway.



# CAMPING PLACE, ACCOMODATION

- ✓ Using of concrete places for trailers in the camping place is recommended.
- ✓ Do not block trailers and tents places by parked cars





# GRID, TAKEOFF RWY 30L

WEIGHT

CAUTION  
RWY LIGHTS

30  
L

PARKING

GRID

TOW

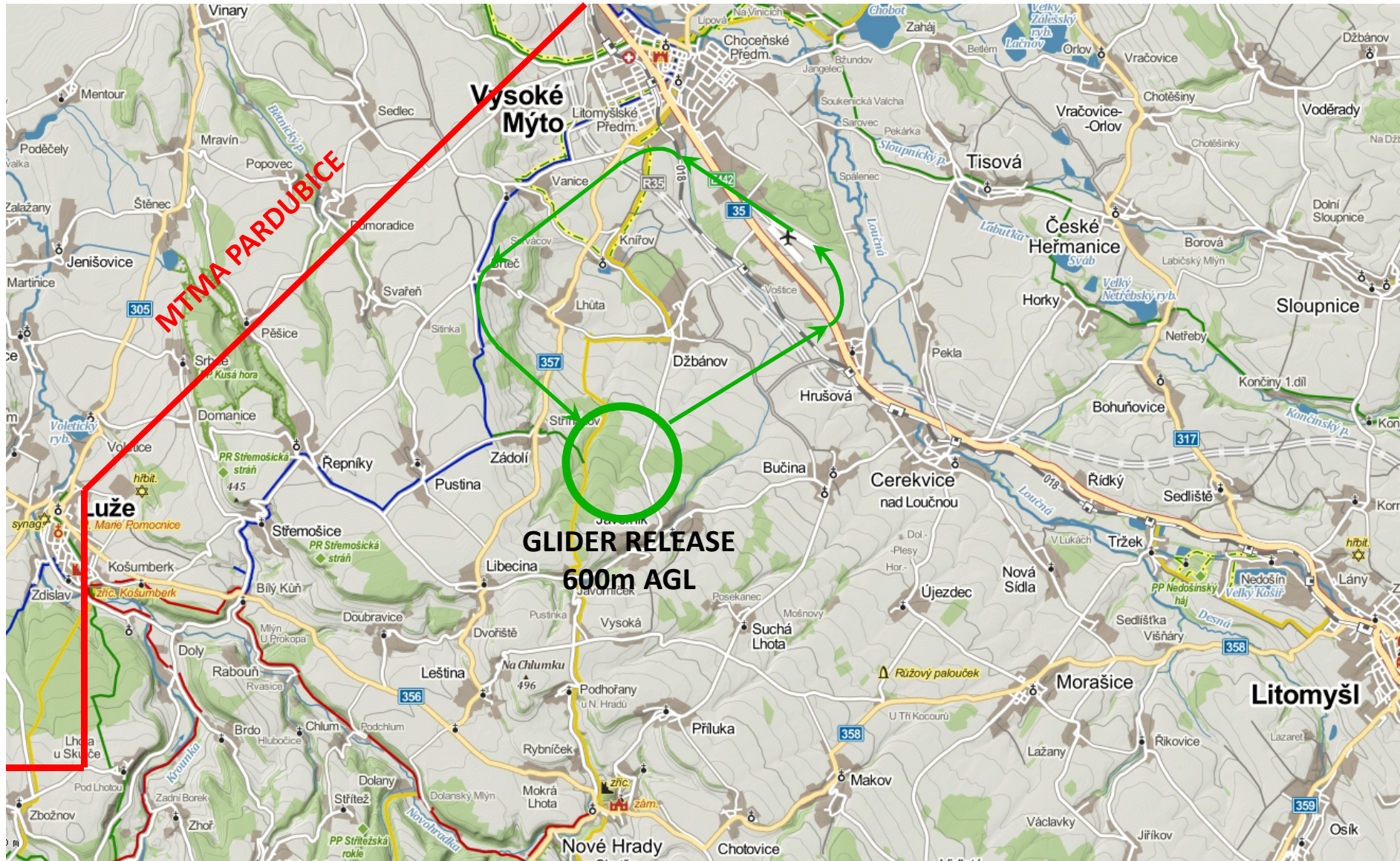
LANDING  
GLIDERS

LANDING  
GLIDERS





# TAKEOFF PROCEDURE RWY30



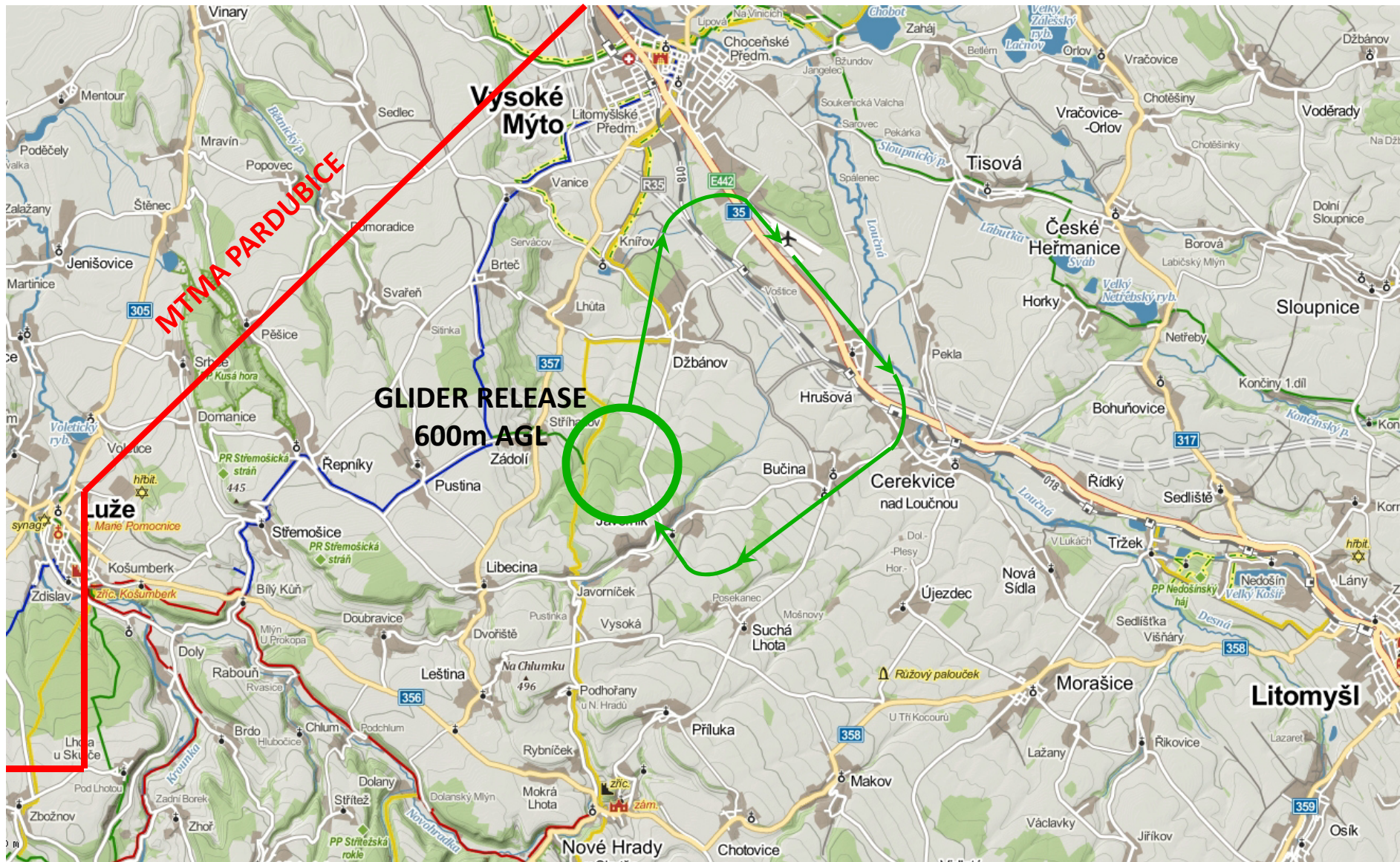


# GRID, TAKEOFF RWY 14



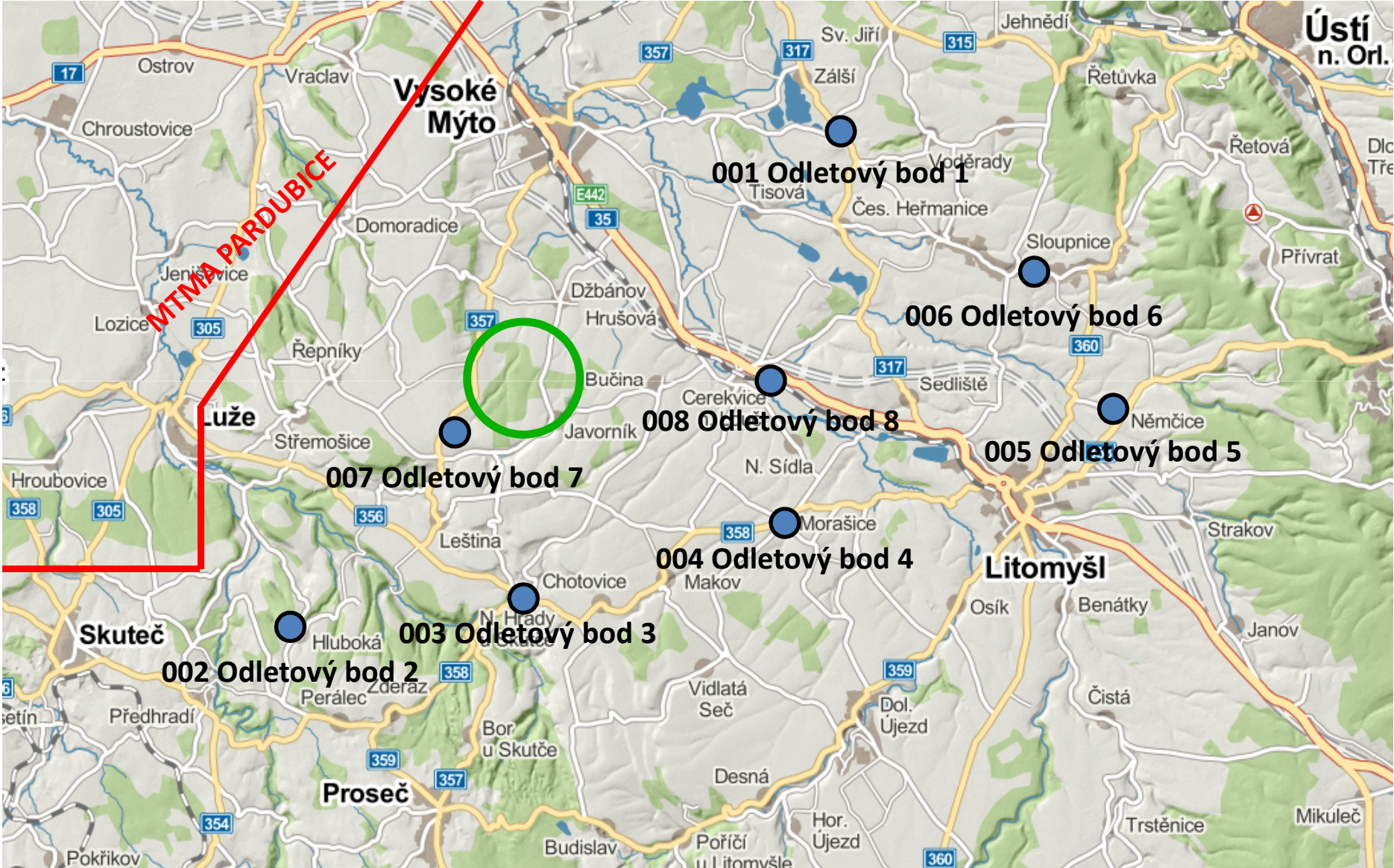


# TAKEOFF PROCEDURE RWY 14

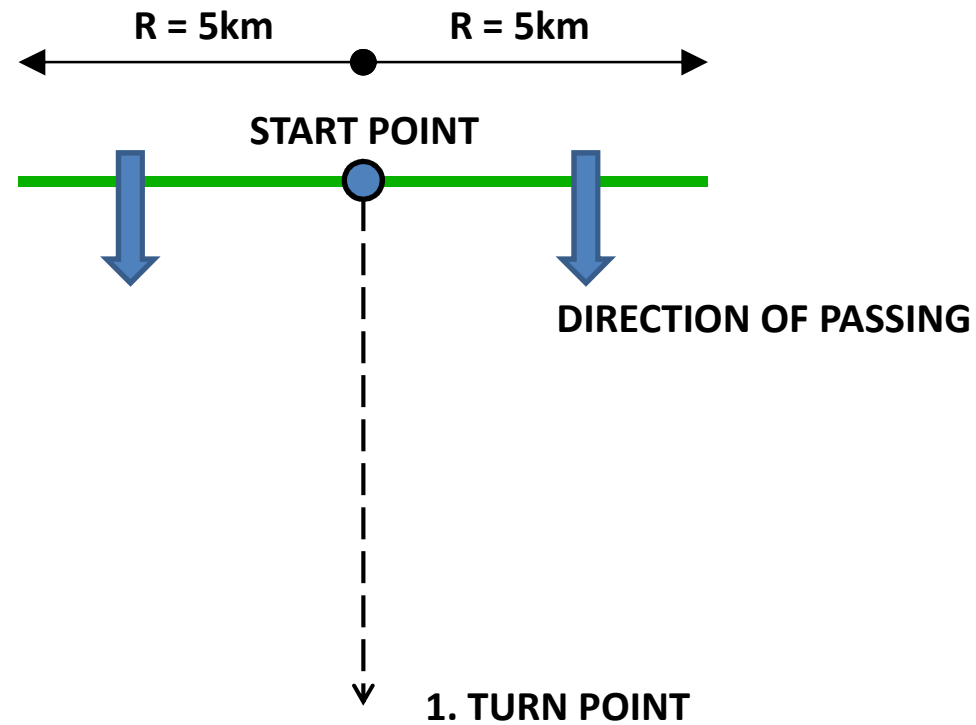




# DEPARATURE POINTS



# DEPARTURE PROCEDURE – LINE





# ARRIVAL PROCEDURE – CIRCLE



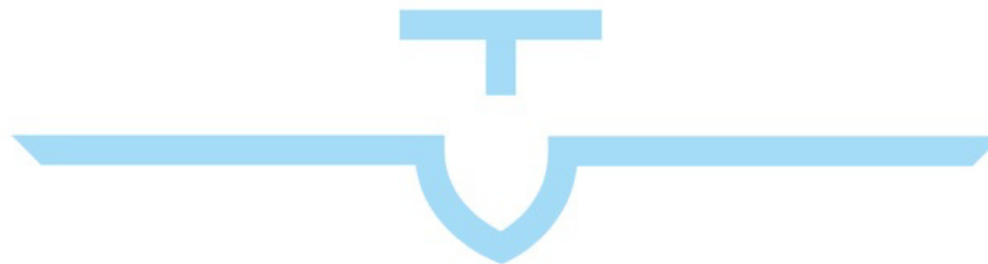
# IMPORTANT PHONE NUMBERS

- ✓ AIRFIELD: +420 465 424 433
- ✓ DIRECTOR: +420 608 847 136
- ✓ ARBITER : +420 606 165 923
- ✓ SERVIS AKVM: +420 607 012 168
- ✓ E-MAIL: [pmcrj2016@seznam.cz](mailto:pmcrj2016@seznam.cz)



# GOOD LUCK

*be reasonable -- look around -- use hat ☺*



**PMČRJ 2016**

VYSOKÉ MÝTO