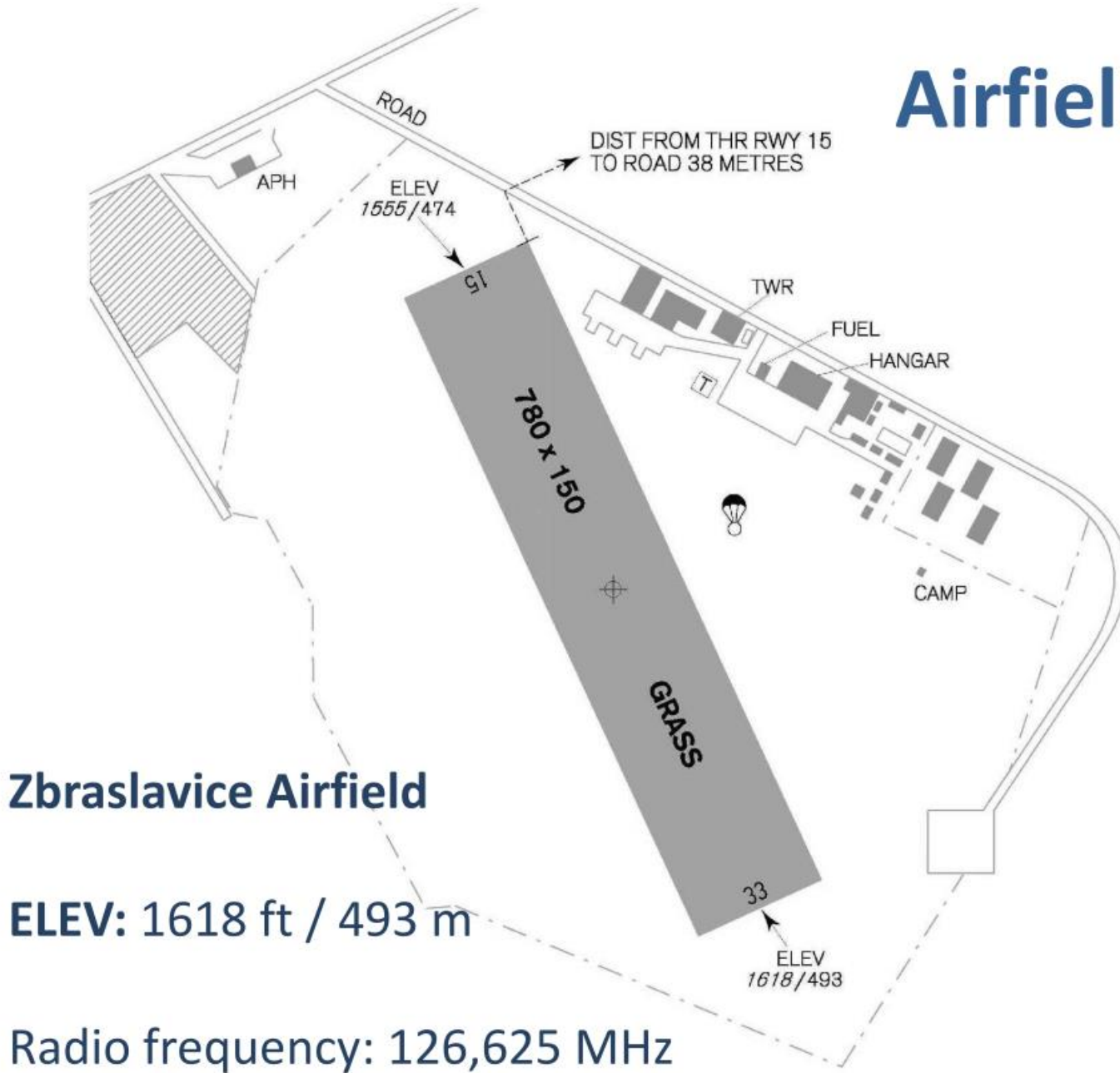


Selfbriefing

# AZ CUP 2015



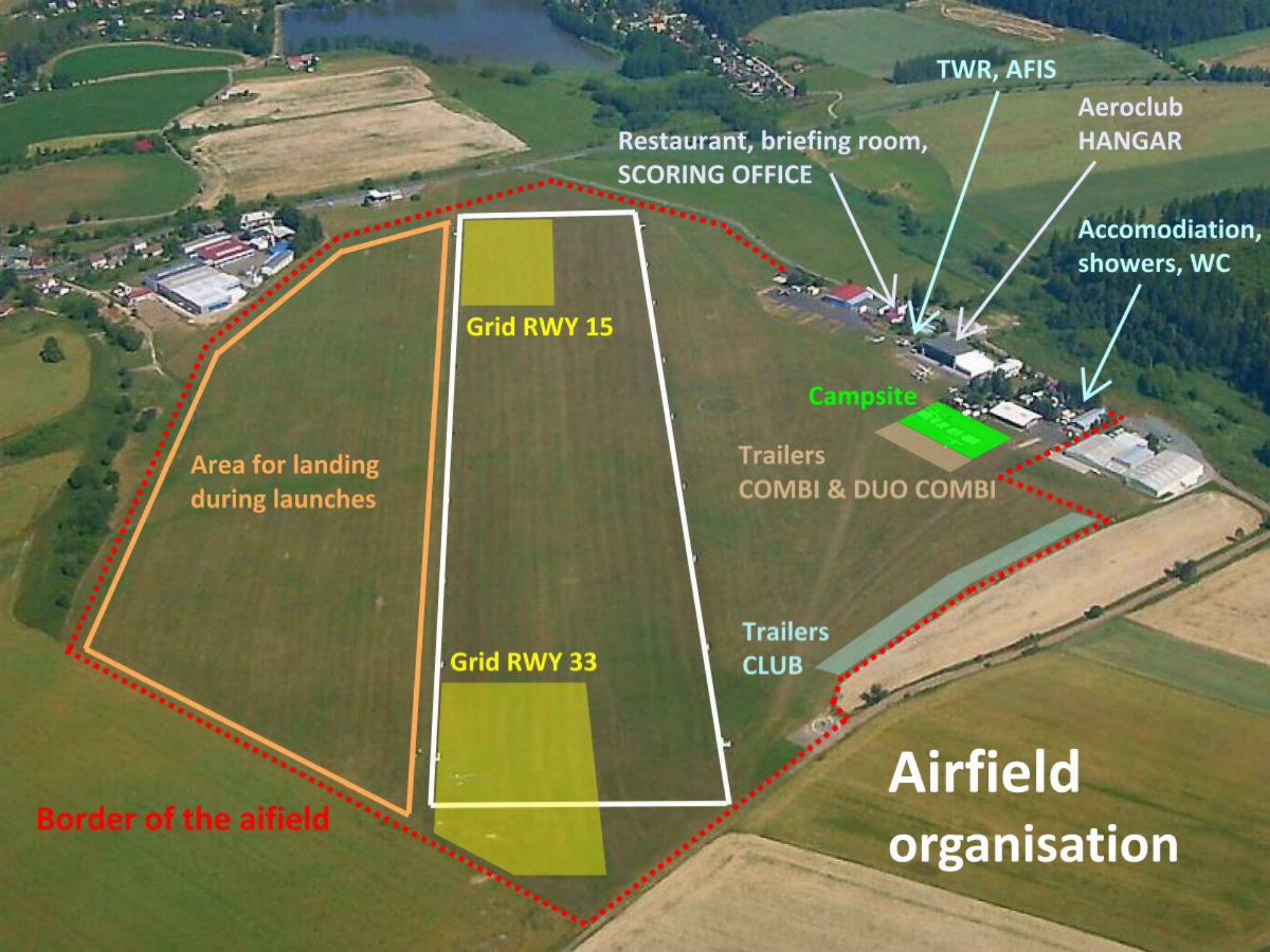
# Airfield Details



## Zbraslavice Airfield

ELEV: 1618 ft / 493 m

Radio frequency: 126,625 MHz



TWR, AFIS

Restaurant, briefing room,  
SCORING OFFICE

Aeroclub  
HANGAR

Accommodation,  
showers, WC

Grid RWY 15

Campsite

Trailers  
COMBI & DUO COMBI

Area for landing  
during launches

Trailers  
CLUB

Border of the airfield

Grid RWY 33

Airfield  
organisation



**Competition area will be specified before the competition according to actual airspace situation in CZE, DE, AT.**

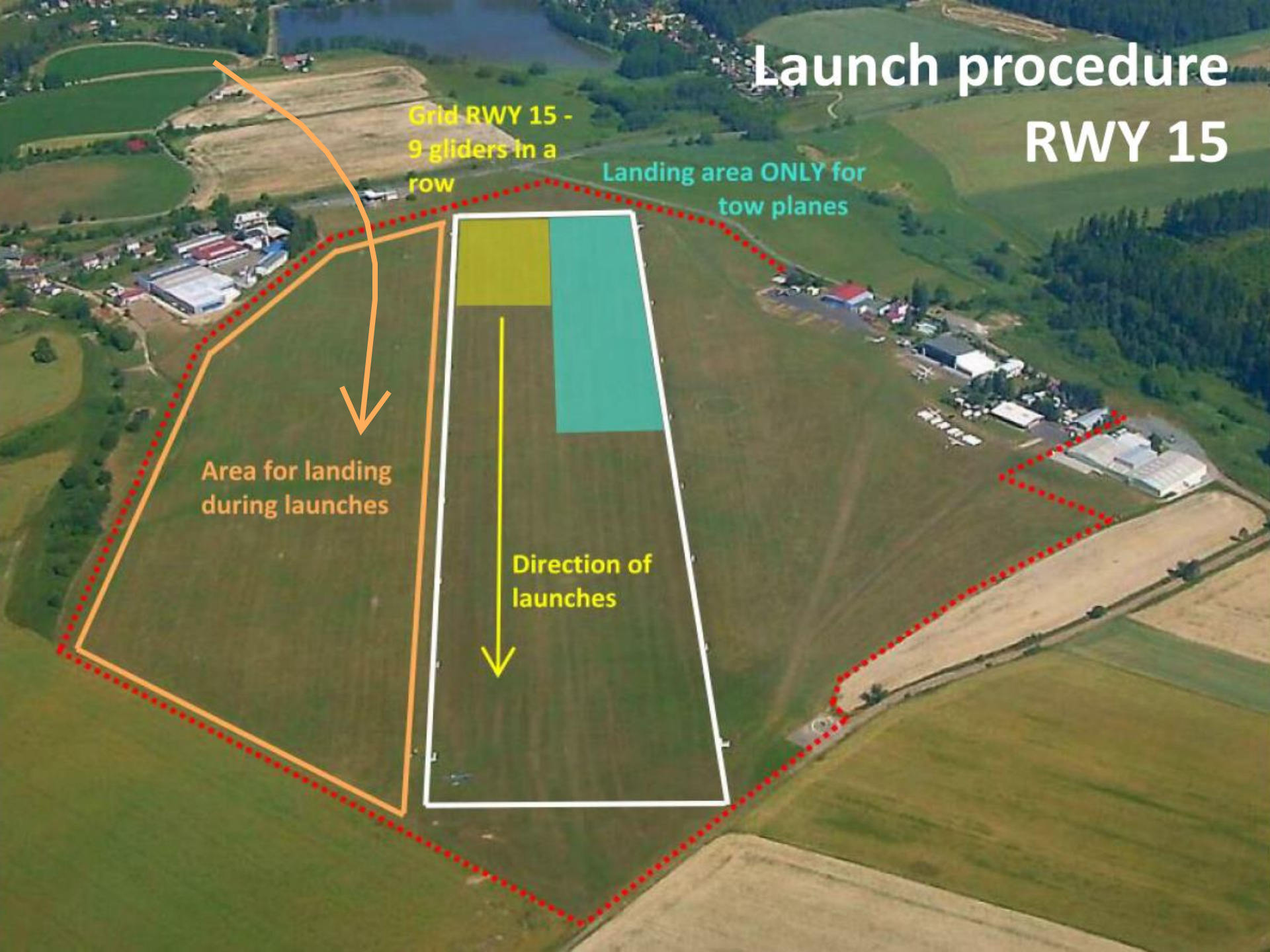
# Launch procedure RWY 15

Grid RWY 15 -  
9 gliders in a  
row

Landing area ONLY for  
tow planes

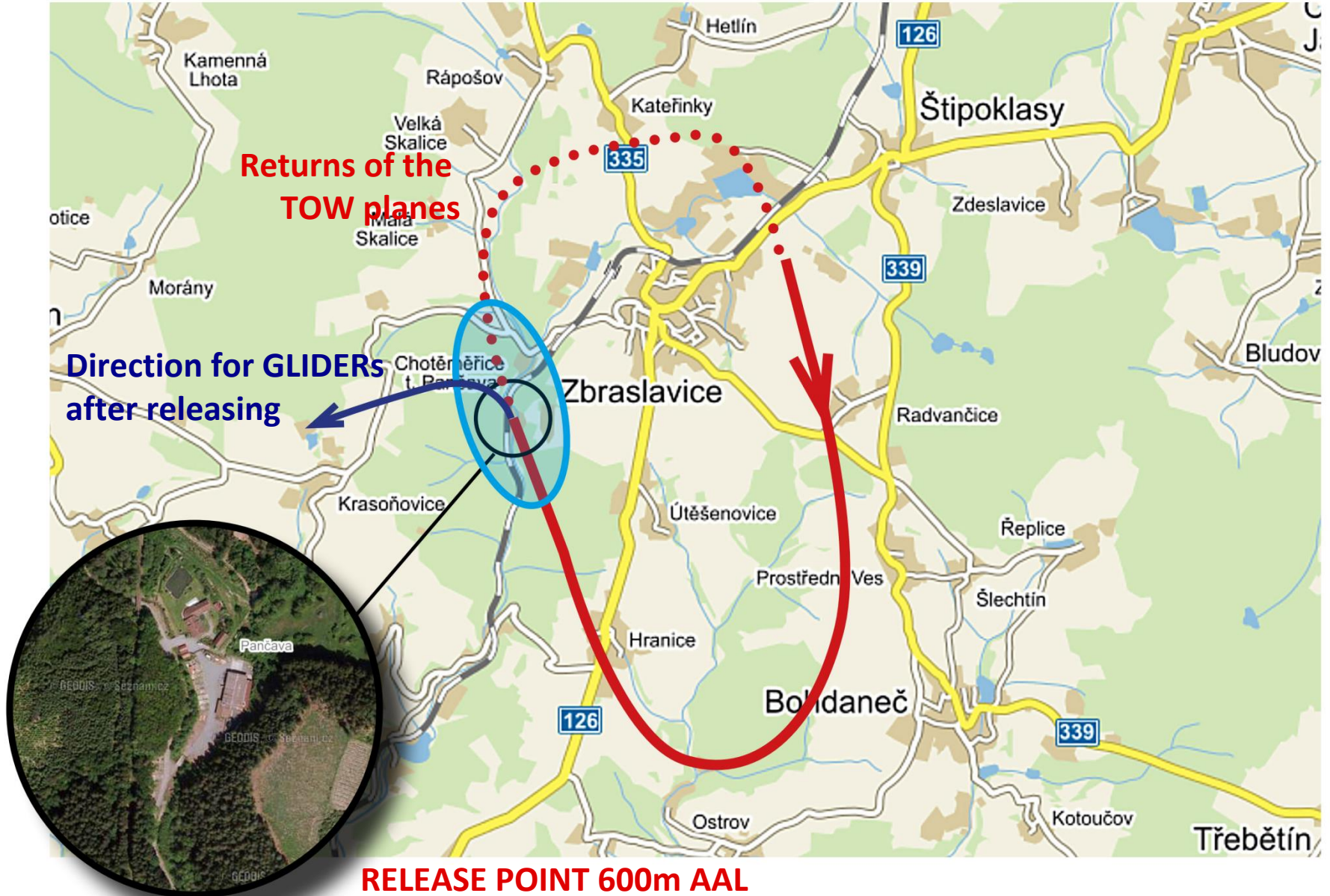
Area for landing  
during launches

Direction of  
launches





# Towings RWY 15



Returns of the  
TOW planes

Direction for GLIDERS  
after releasing

RELEASE POINT 600m AAL



# Launch procedure RWY 33

Direction of  
launches

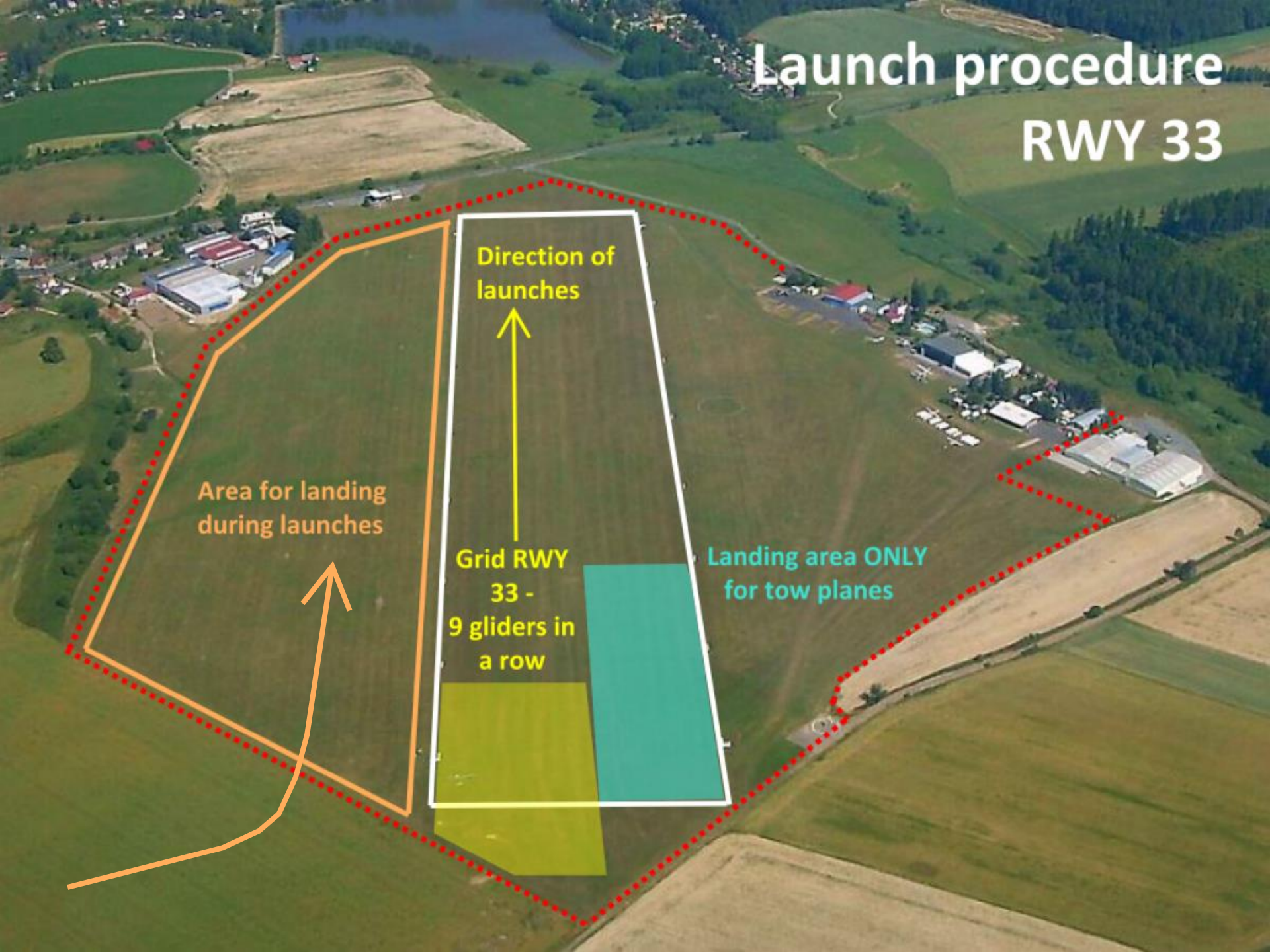


Area for landing  
during launches



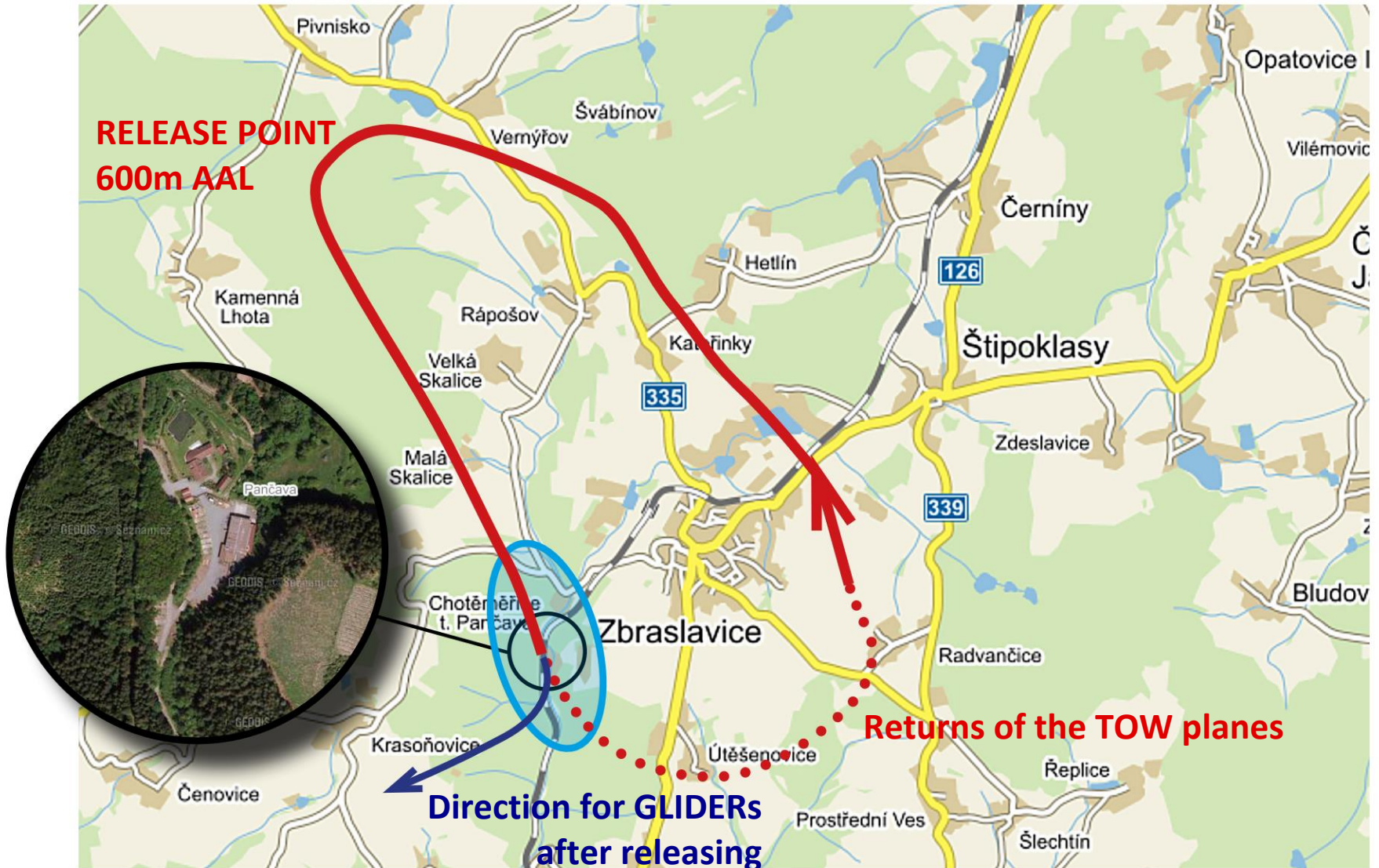
Grid RWY  
33 -  
9 gliders in  
a row

Landing area ONLY  
for tow planes



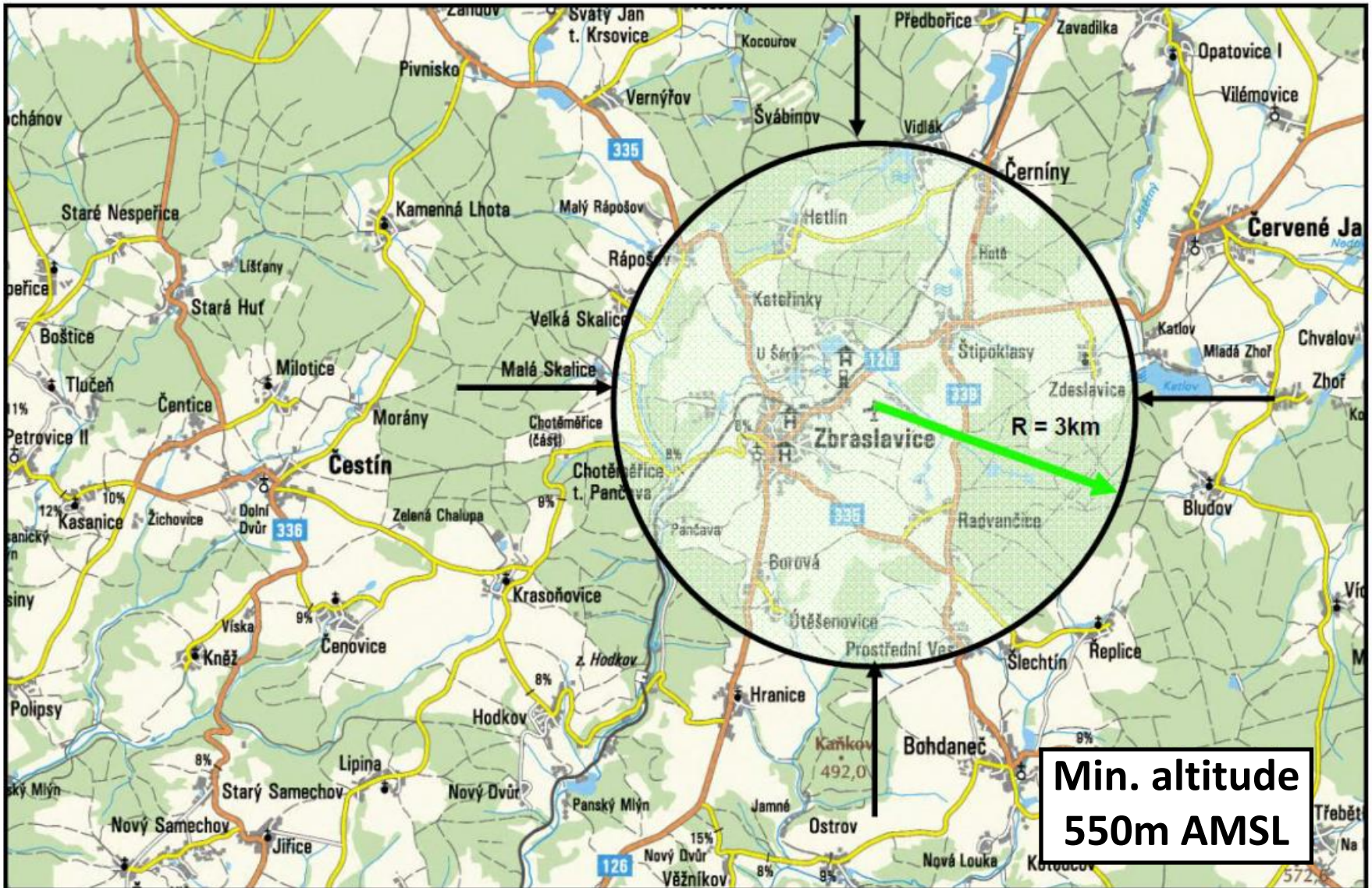


# Towings RWY 33

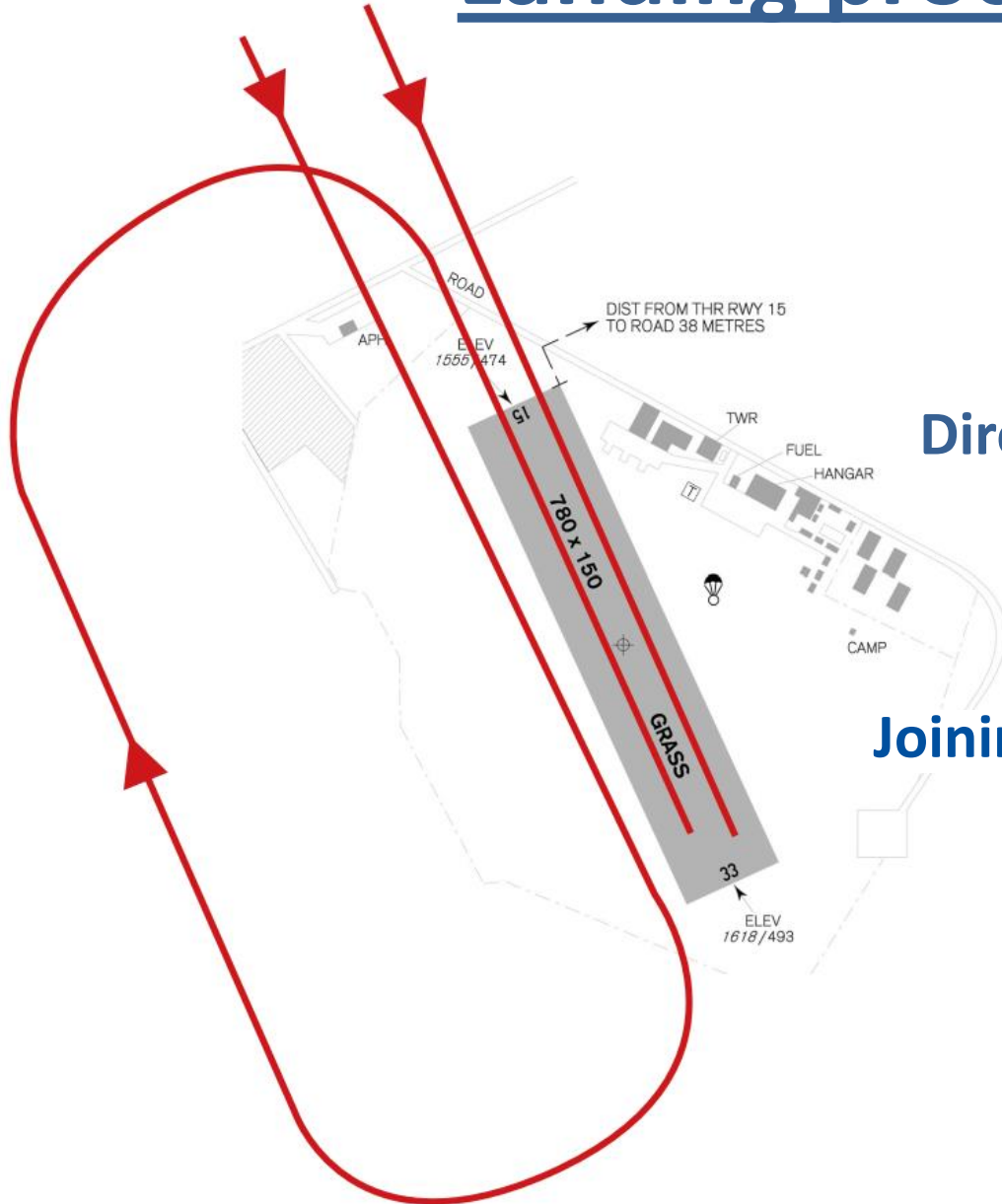




# Finish Ring – radius 3 km



# Landing procedures RWY 15



**Direct (straight-in) landing**

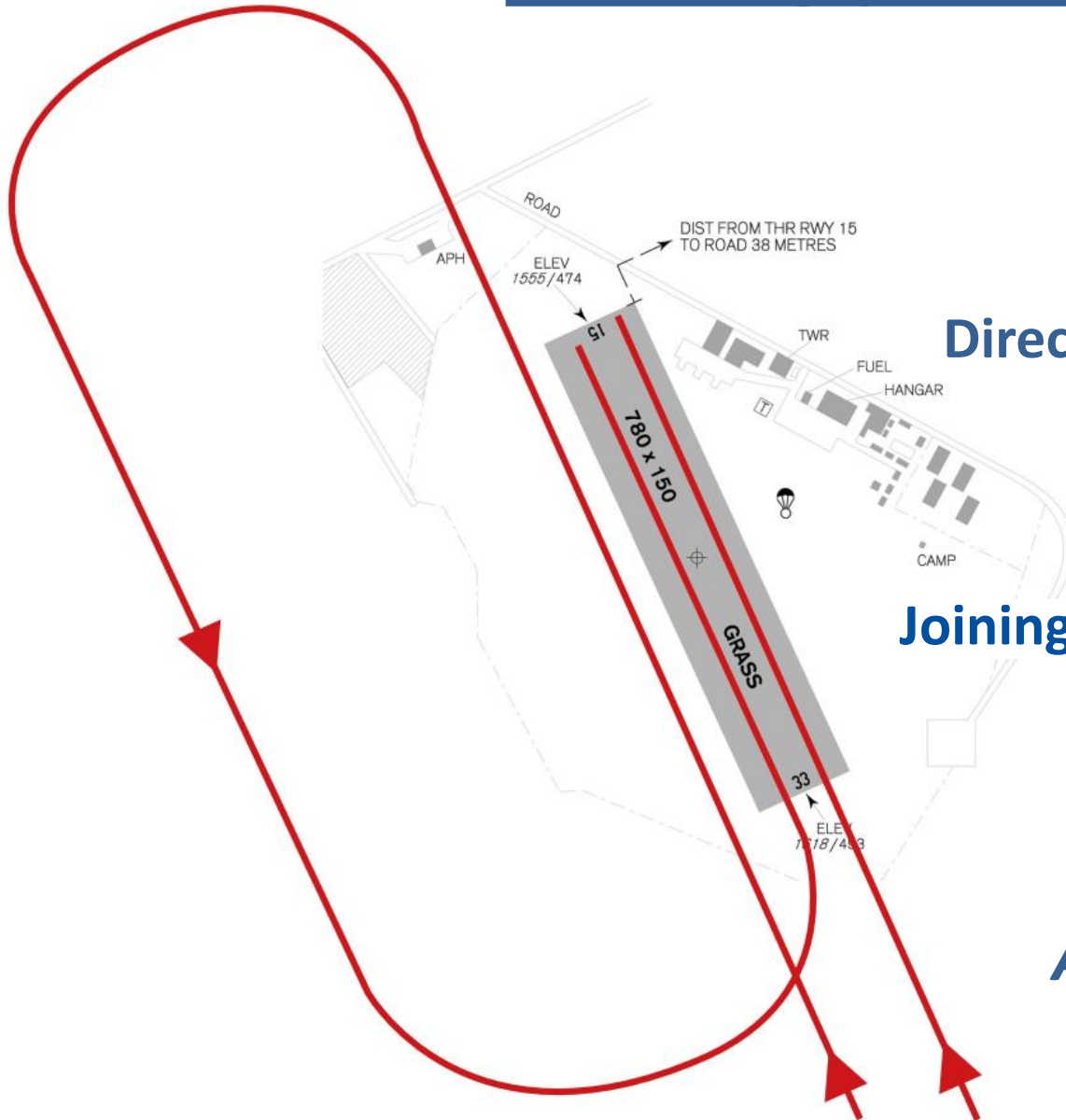
**or**

**Joining to the air traffic pattern**

***Air traffic pattern for  
GLIDERS RWY 15***



# Landing procedures RWY 33



**Direct (straight-in) landing**

**or**

**Joining to the air traffic pattern**

***Air traffic pattern for  
GLIDERS RWY 33***

# We look forward to you!

