



# AZ CUP 2017

*SELFBRIEFING*

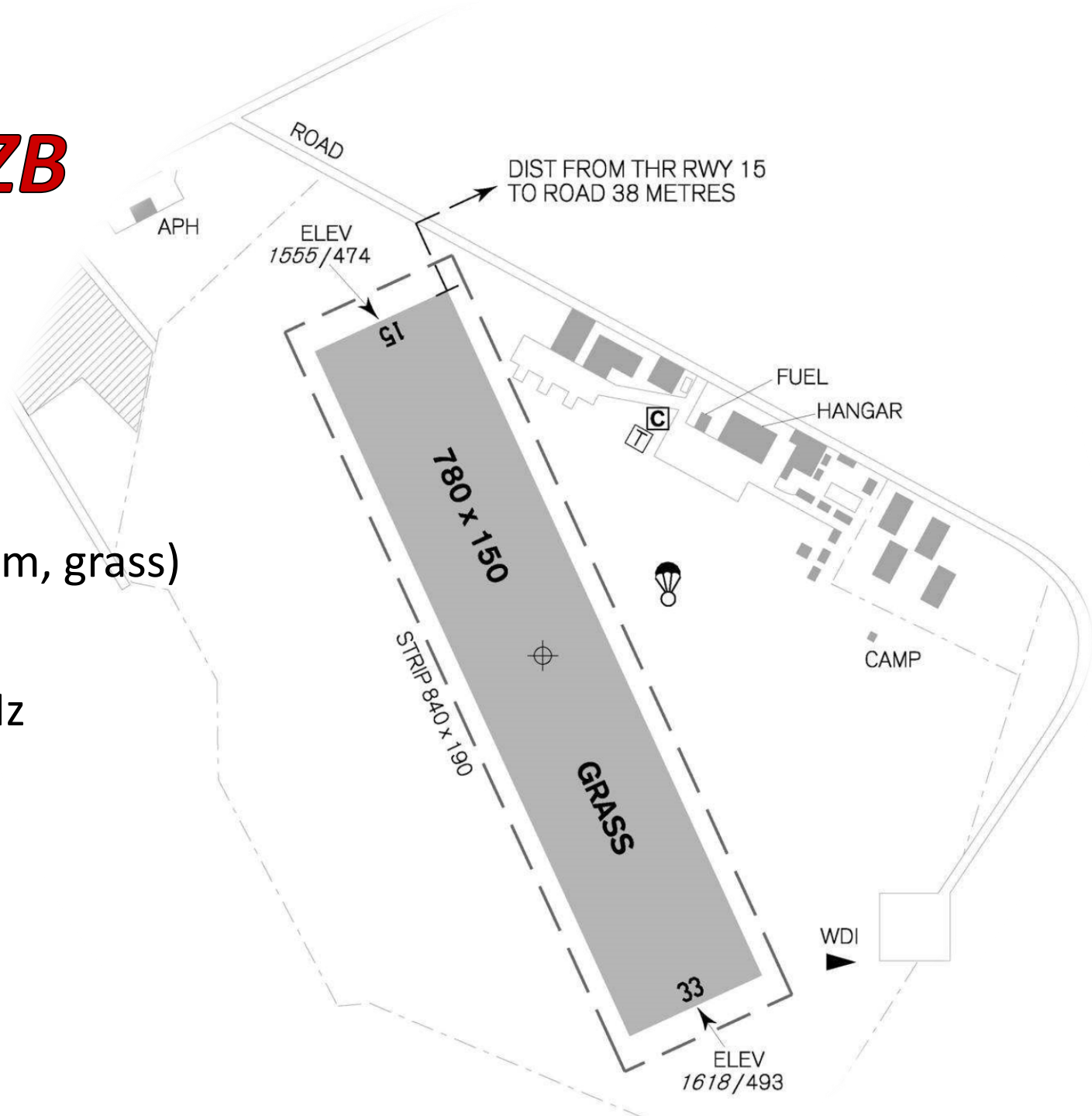
# *Airfield details - LKZB*

Elevation: 493m / 1617ft.

Runway (RWY): 150°/330° (780x150 m, grass)

Frequency (FREQ): 126,625 MHz

Competition frequency: 126,625 MHz





HANGAR

**MAIN BUILDING -  
RESTAURANT,  
BRIEFING ROOM,  
SCORING OFFICE**

GATEWAY

DRIVEWAY

TWR

ACCOMMODATION,  
WC, SHOWERS

CAMPSITE

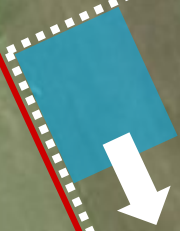
TRAILERS  
COMBI CLASS

TRAILERS  
CLUB CLASS

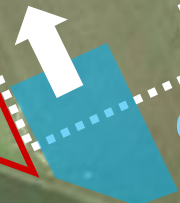


**KUTNÁ HORA DIRECTION**

**GRID RWY 15**



**AREA FOR  
LANDINGS  
DURING  
COMPETITION  
LAUNCHES**



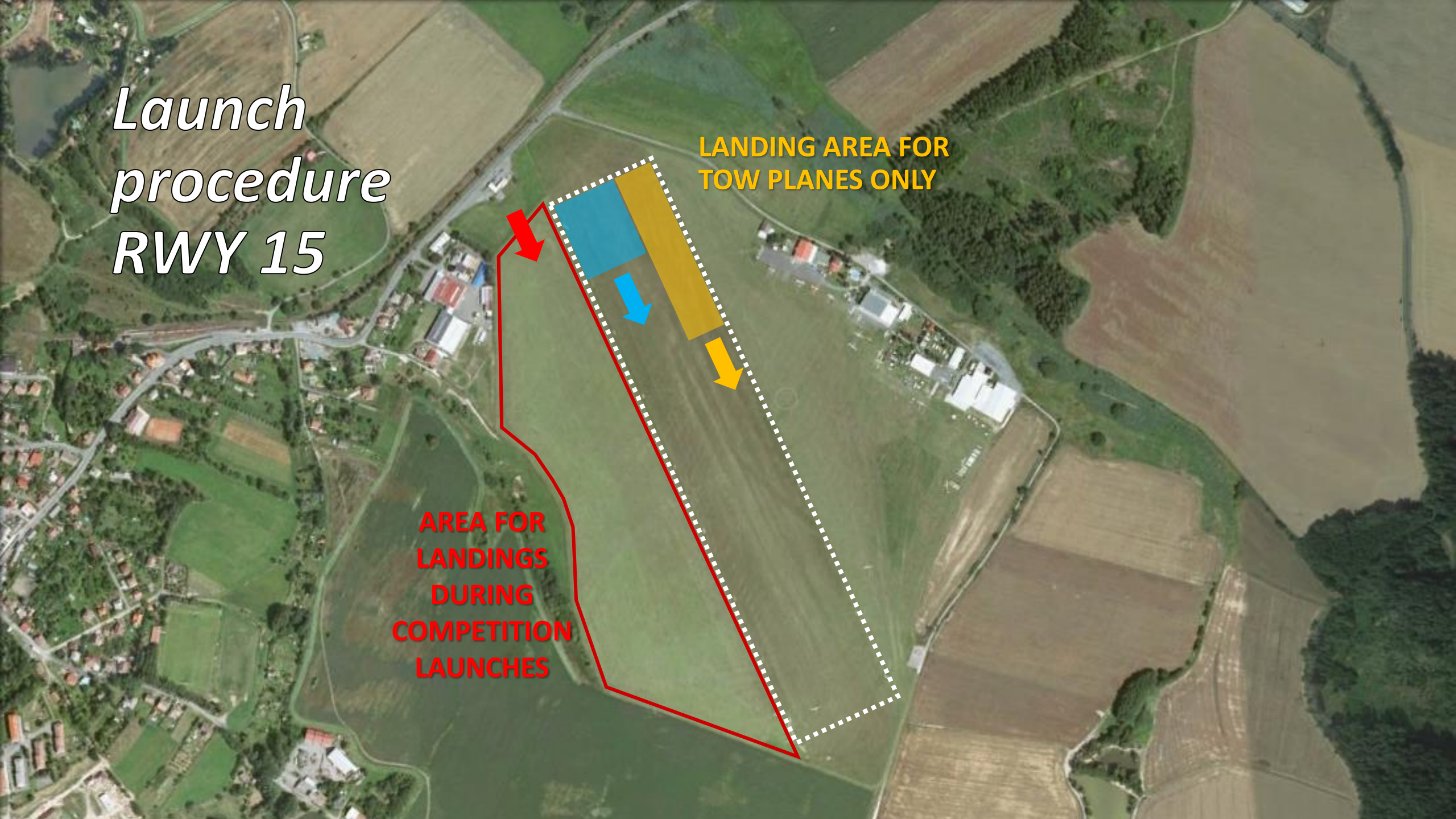
**GRID RWY 33**

***Competition area will be specified before the competition according to actual airspace situation in CZE, DE, AT.***

*Launch  
procedure  
RWY 15*

LANDING AREA FOR  
TOW PLANES ONLY

AREA FOR  
LANDINGS  
DURING  
COMPETITION  
LAUNCHES



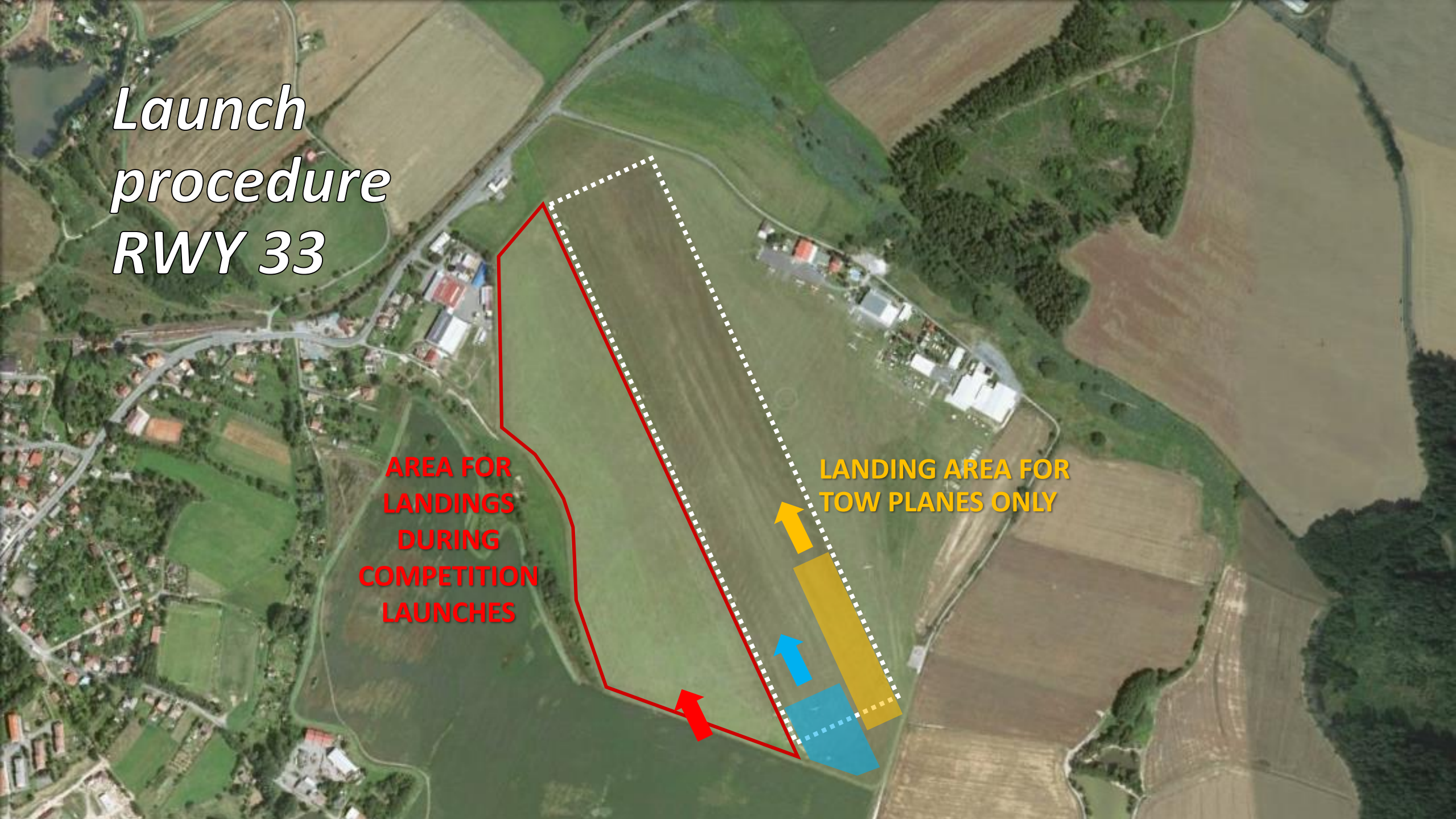
# *Release point – launch procedure RWY 15*



*Launch  
procedure  
RWY 33*

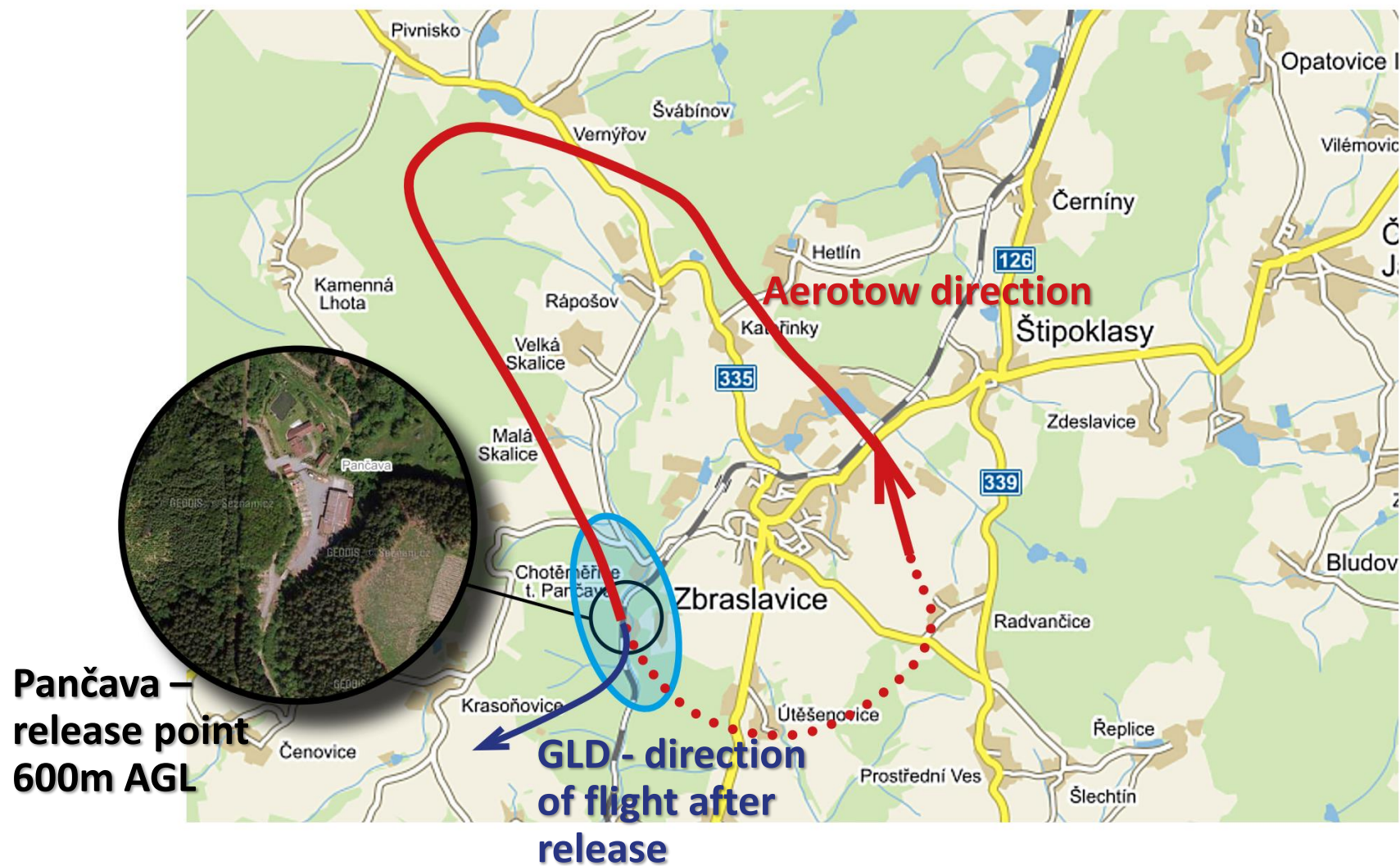
**AREA FOR  
LANDINGS  
DURING  
COMPETITION  
LAUNCHES**

**LANDING AREA FOR  
TOW PLANES ONLY**





# ***Bod vypnutí – RWY 33***



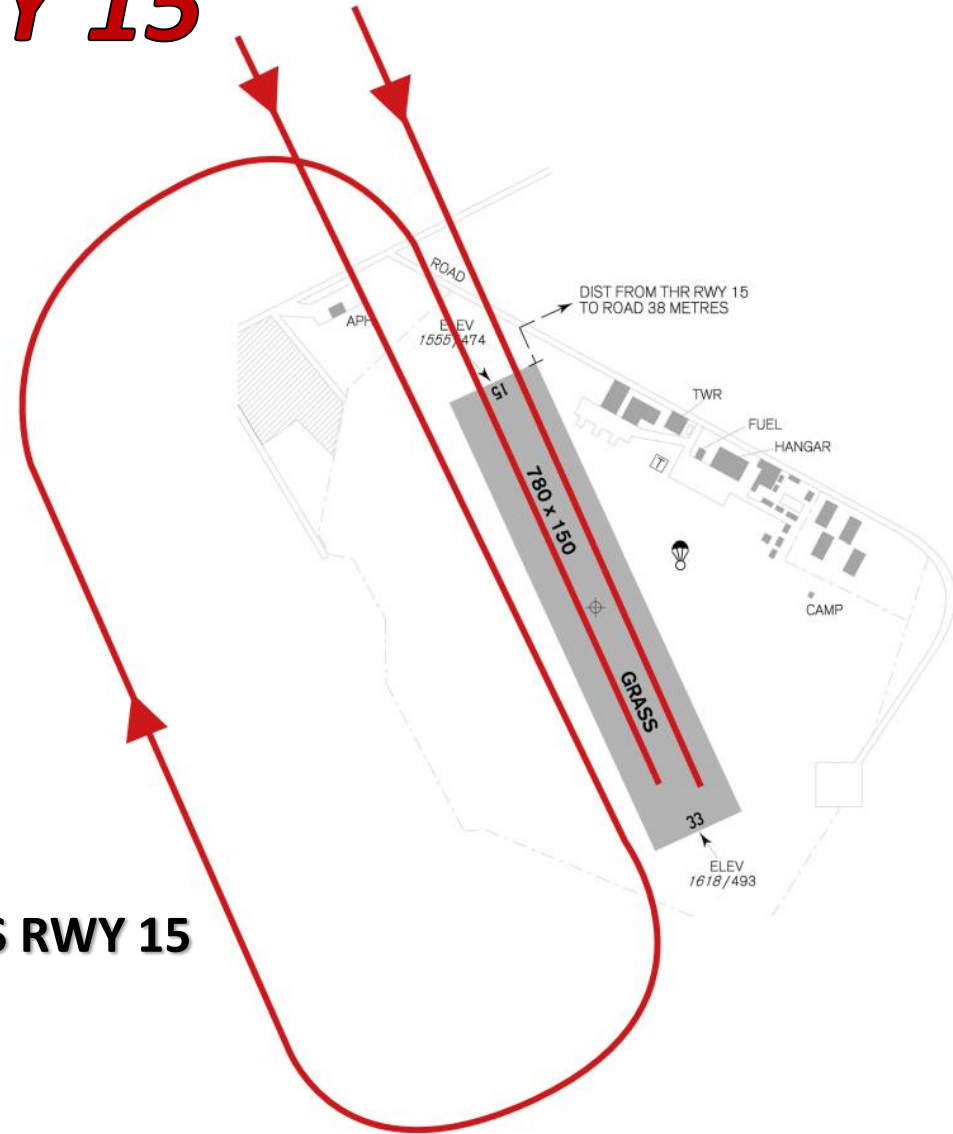
*Finish ring—  
radius 3km*

Min. altitude  
550 m AMSL

# *Landing procedures RWY 15*

**Direct (stright-in) landing or lining up to the air traffic pattern**

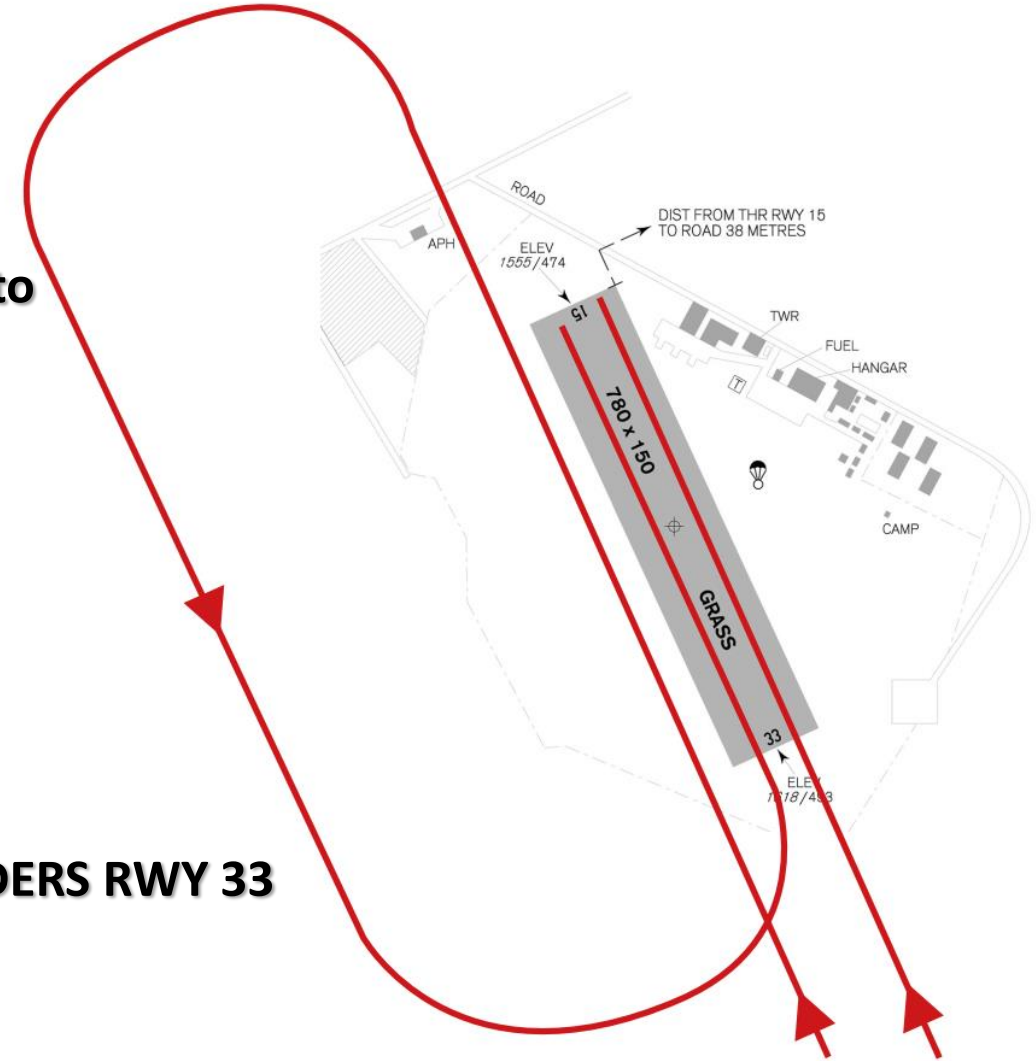
**AIR TRAFFIC PATTERN FOR GLIDERS RWY 15**



# *Landing procedures RWY 33*

**Direct (stright-in) landing or lining up to the air traffic pattern**

**AIR TRAFFIC PATTERN FOR GLIDERS RWY 33**





*AZ CUP team*