



SELF BRIEFING

Czech Regional Championship 2016 & preWWGC 2017

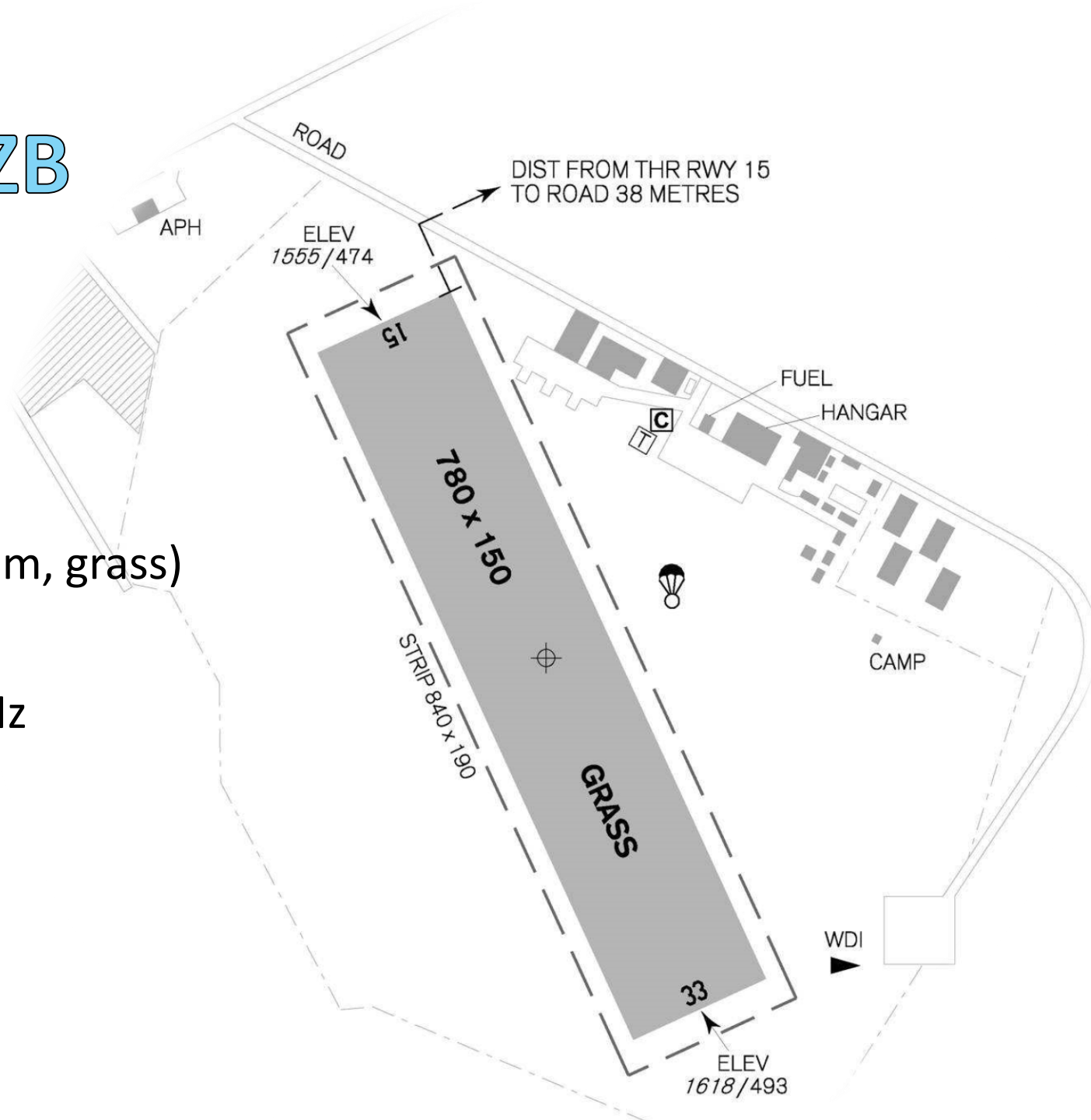
Airfield details - LKZB

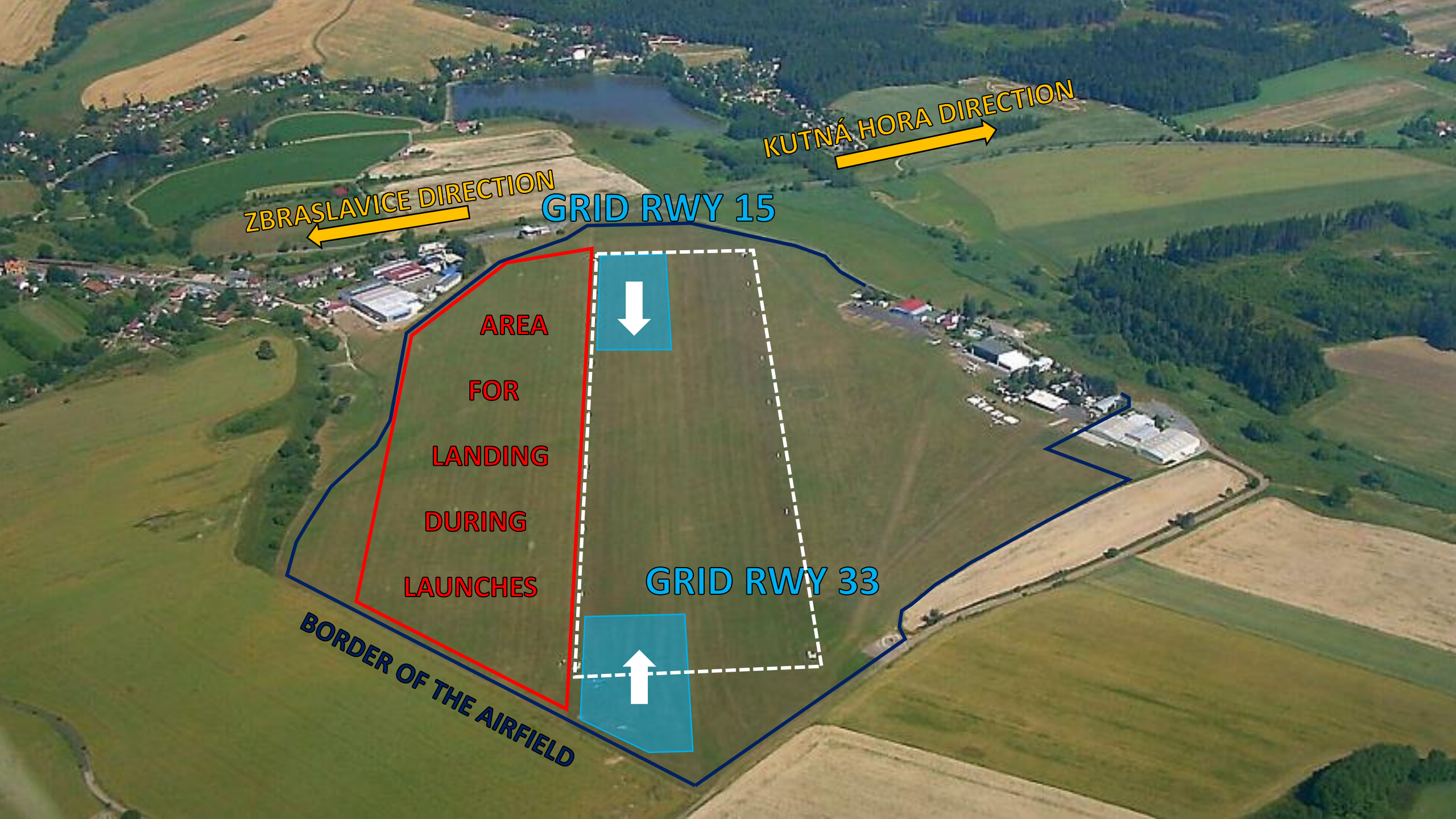
Elevation: 493m / 1617ft.

Runway (RWY): 150°/330° (780x150 m, grass)

Frequency (FREQ): 126,625 MHz

Competition frequency: 126,625 MHz





ZBRASLAVICE DIRECTION

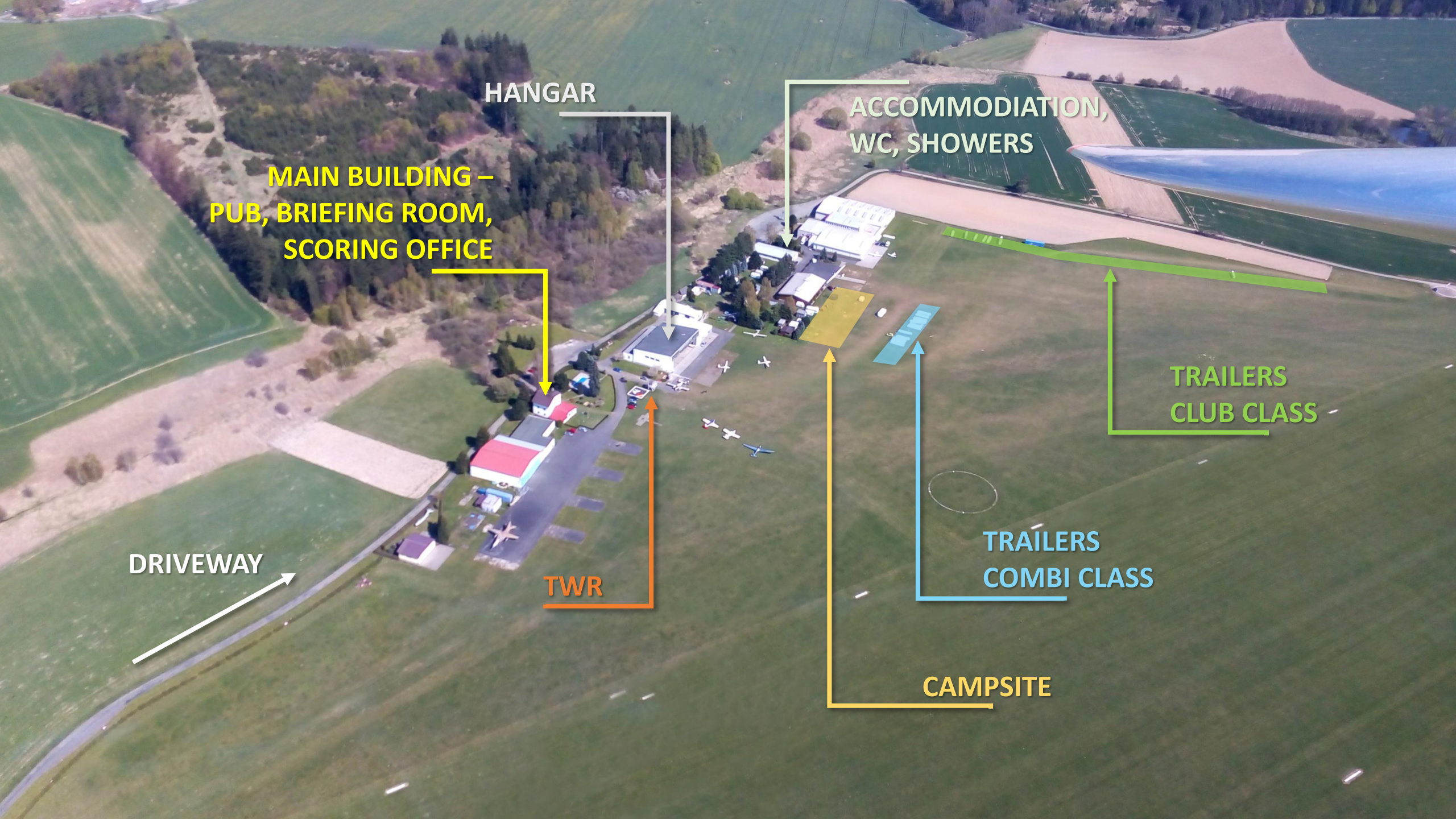
KUTNÁ HORA DIRECTION

GRID RWY 15

AREA
FOR
LANDING
DURING
LAUNCHES

GRID RWY 33

BORDER OF THE AIRFIELD



HANGAR

MAIN BUILDING –
PUB, BRIEFING ROOM,
SCORING OFFICE

ACCOMMODATION,
WC, SHOWERS

TRAILERS
CLUB CLASS

TRAILERS
COMBI CLASS

CAMPSITE

DRIVEWAY

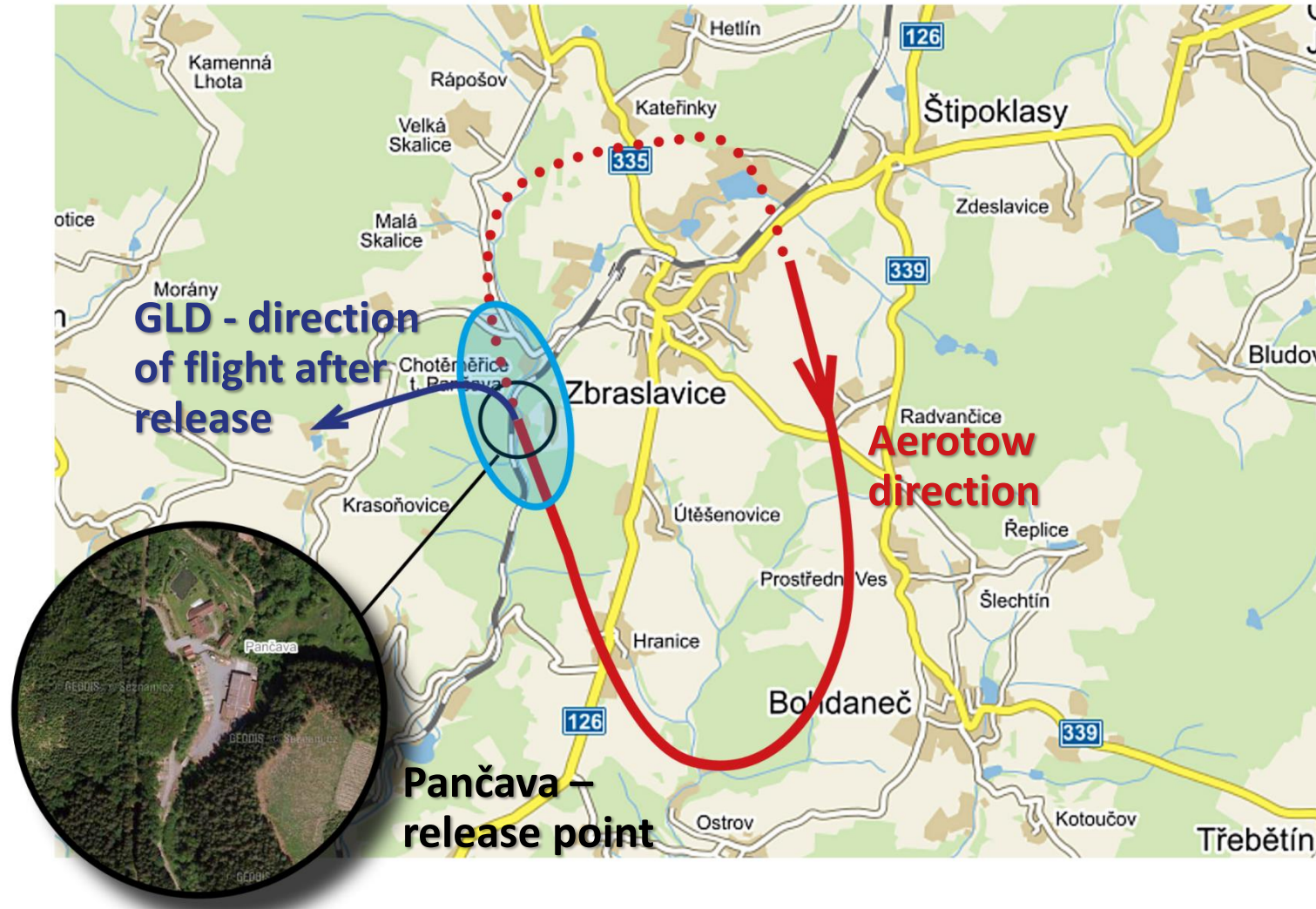
TWR

Competition area will be specified before the competition according to actual airspace situation in CZE, DE, AT.

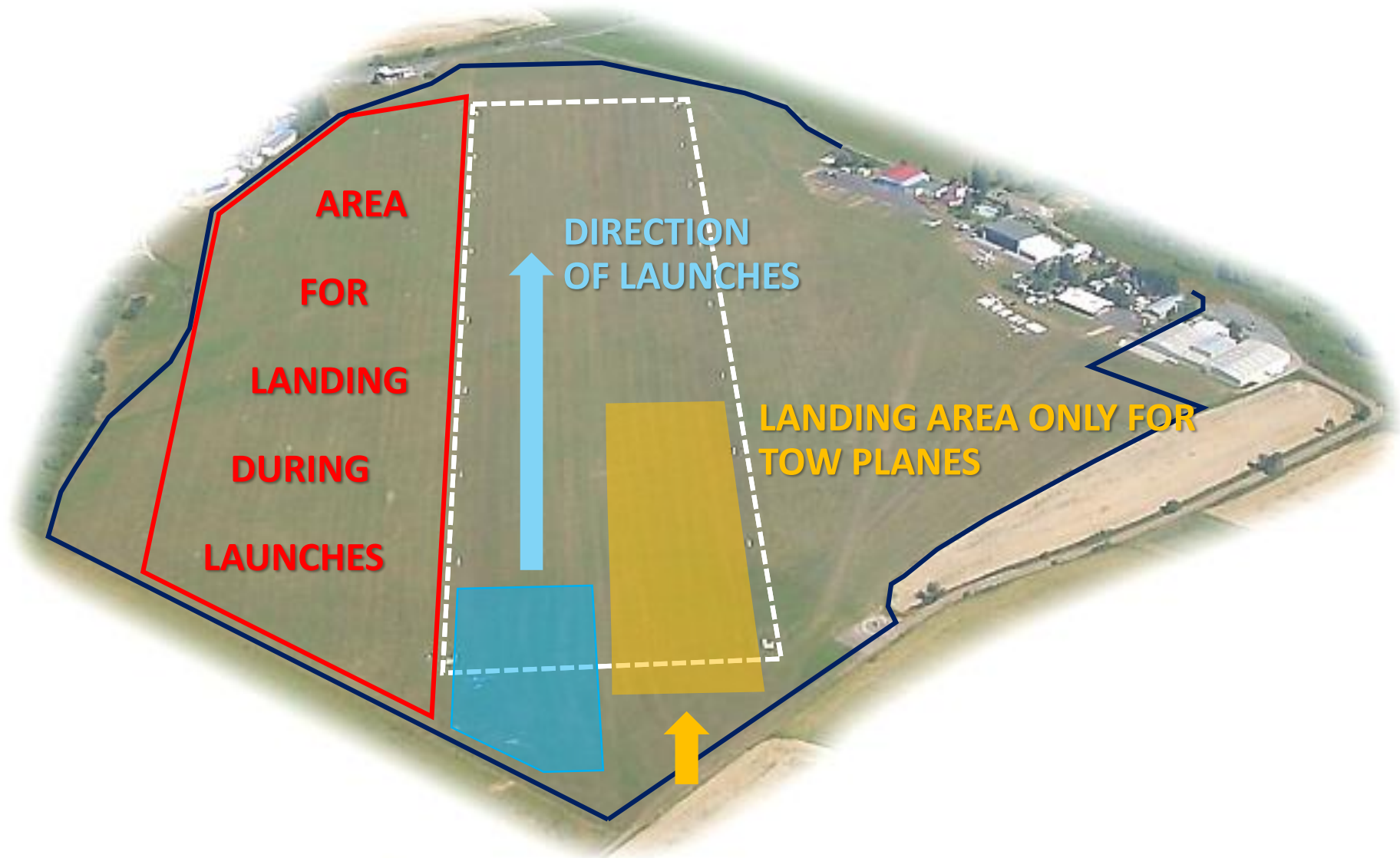
Launch procedure RWY 15



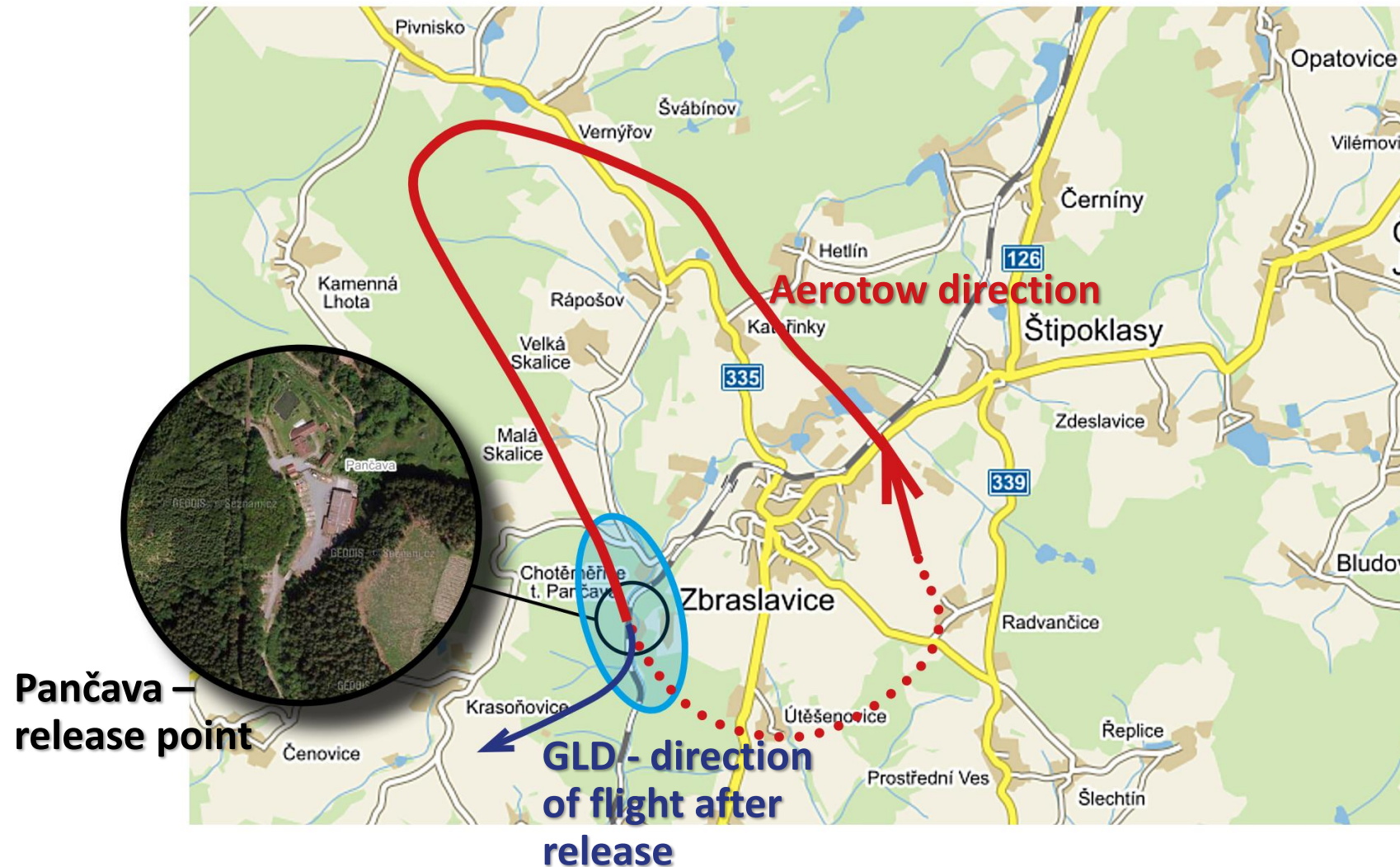
Release point – launch procedure RWY 15



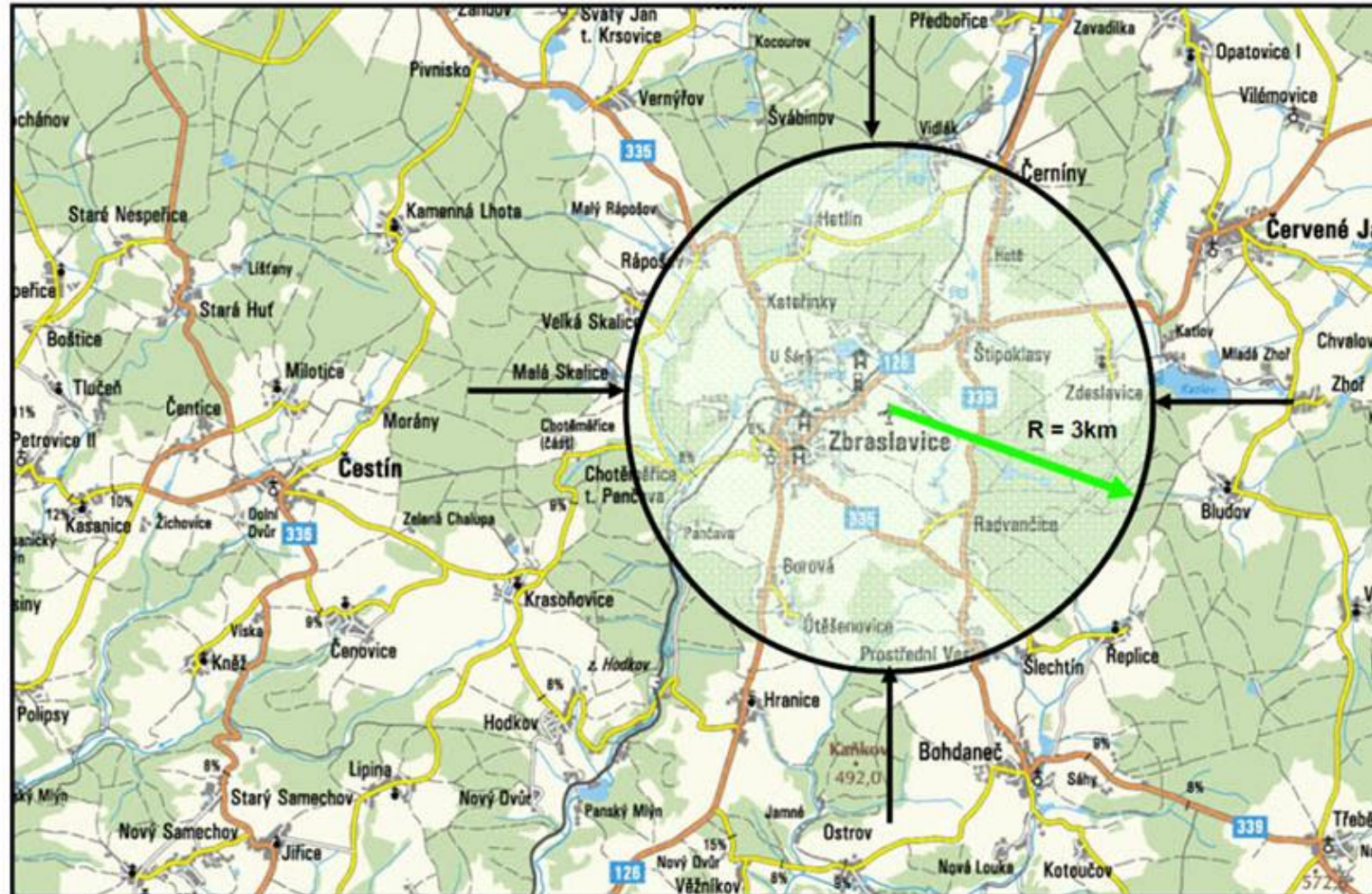
Launch procedure RWY 33



Release point – launch procedure RWY 33



Finish ring – radius 3km

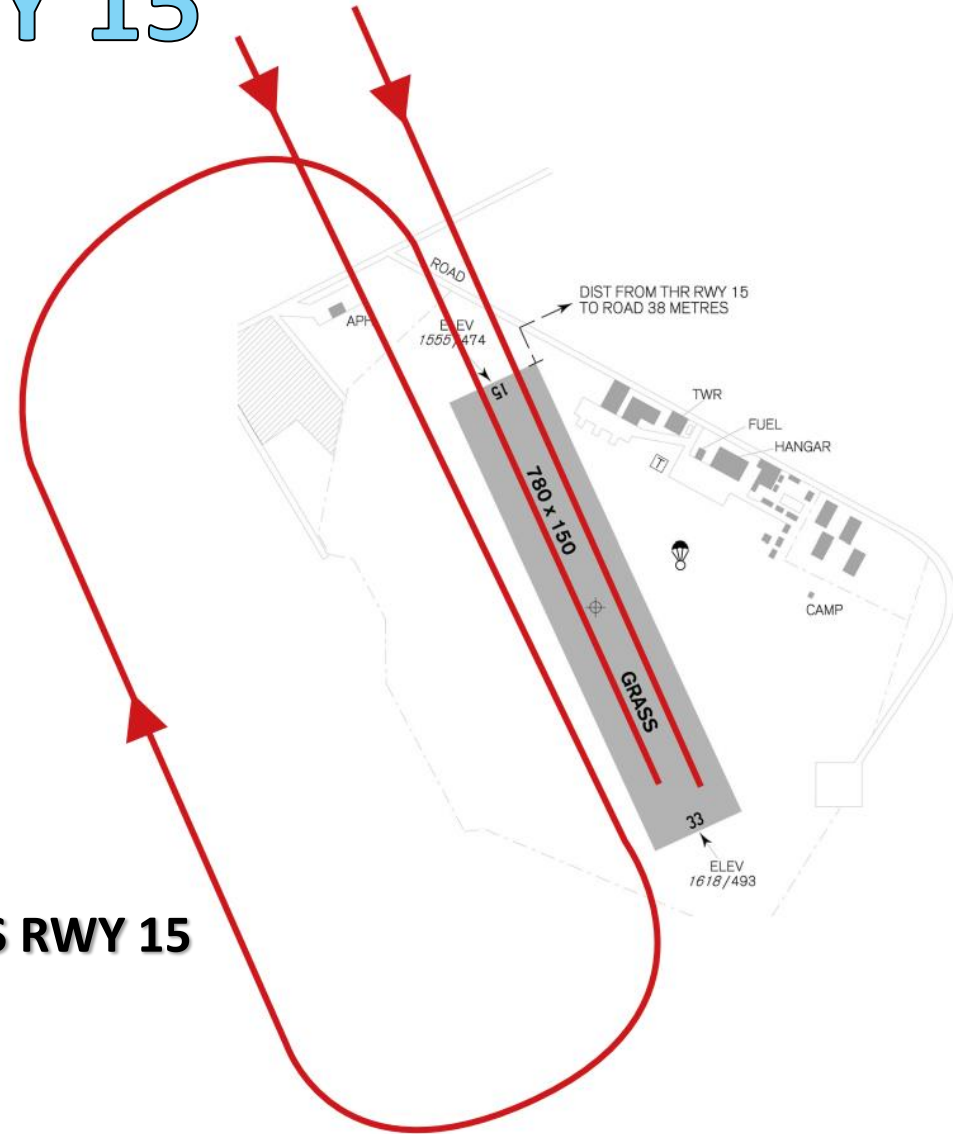


Min. altitude
550 m AMSL

Landing procedures RWY 15

Direct (stright-in) landing or lining up to the air traffic pattern

AIR TRAFFIC PATTERN FOR GLIDERS RWY 15



Landing procedures RWY 33

Direct (stright-in) landing or lining up to the air traffic pattern

AIR TRAFFIC PATTERN FOR GLIDERS RWY 33

